



Production sites

Germany

Bad Mergentheim
Gotteszell
Reinbek/Hamburg
Menden

Europe

Great Britain
Italy
Slovenia
Switzerland

**Asia/
Pacific/
Middle East**
China

America
USA

Sales units

Europe

Belgium
Czech Republic
France
Germany
Great Britain
Hungary
Italy
Netherlands
Norway
Poland
Russia
Slovenia
Spain
Sweden
Switzerland
Turkey

**Asia/
Pacific/
Middle East**

Azerbaijan
China
India
Indonesia
Japan
Kazakhstan
Malaysia
Singapore
South Korea
Thailand
United Arab Emirates

**Australia/
New Zealand**
Australia

America
Brazil
USA

Africa
South Africa

Quality Standards

All BARTEC site locations fulfill highest quality standards. These standards meet the production sites through a certified management system according to the international standard ISO 9001:2015.

At some site locations further certificates and accreditations are being implemented according to their own goals and requirements for their specific products, e. g.:

- Quality Assurance System according to Directive 2014/34/EU and IECEx schema
- EN 9100 Aerospace Series, Quality Systems
- DIN EN ISO 50001 Energy Management System
- KTA 1401 German Nuclear Safety Standards Commission
- ISO 14001 Environmental Management system
- SCC Safety Certificate Contractors

The management systems are subject to scrutiny by, among others, the following certification bodies and monitoring organisations, e. g.:

| | |
|----------|---|
| TÜV NORD | Technischer Überwachungsverein |
| DNV - GL | Det Norske Veritas - German Loyds |
| UL | Underwriters Laboratories |
| PTB | Physikalisch-Technische Bundesanstalt |
| BVQI | Bureau Veritas Quality International |
| KEMA | Keuring Elektrotechnische Materialen |
| CSA | Canadian Standard Association |
| FM | Factory Mutuals |
| VDE | Verband der Elektrotechnik Elektronik Informationstechnik |
| DEKRA | Deutscher Kraftfahrzeugs-Überwachungsverein |
| AREVA | AREVA GmbH |
| INMETRO | Instituto de Metrologia |

Address

Bad Mergentheim BARTEC GmbH
 Max-Eyth-Str. 16
 97980 Bad Mergentheim
 Germany

Phone: +49 7931 597 0
 Fax: +49 7931 597 119
 info@bartec.de
 www.bartec.de

Key Figures

BARTEC Group

| | | Financial years | 2012/13 | 2013/14 | 2014/15 | 2015/16 | 2016/17 |
|-----|------------------------|------------------------------------|-------------|-------------|-------------|-------------|-------------|
| CEO | Dr. Martin U. Schefter | Annual net sales (Mio. EUR) | 304 | 311 | 338 | 288 | 284 |
| CFO | Gerhard W. Bickmann | Investment (Mio. EUR) | 10.6 | 10.8 | 17.5 | 13.9 | 17.1 |

BARTEC GmbH Site location Bad Mergentheim

| | | Financial years | 2012/13 | 2013/14 | 2014/15 | 2015/16 | 2016/17 |
|--|---|------------------------------------|-------------|-------------|-------------|-------------|-------------|
| Site Management Claus-Henning Flöttmann | Head of Quality, Environment, Energy and Work Safety Management Andreas Lucas | Annual net sales (Mio. EUR) | 70.4 | 75.0 | 77.5 | 53.2 | 54.9 |
| Quality Representative/ Health and Safety Officer Steve Hübner | | Investment (Mio. EUR) | 4.8 | 4.2 | 4.5 | 4.4 | 3.6 |

Insurance Coverage

Insurer

XL Catlin Insurance and AIG Europe

Limits of liability

50 Mio. Euro or personal and property damage

Scope of coverage

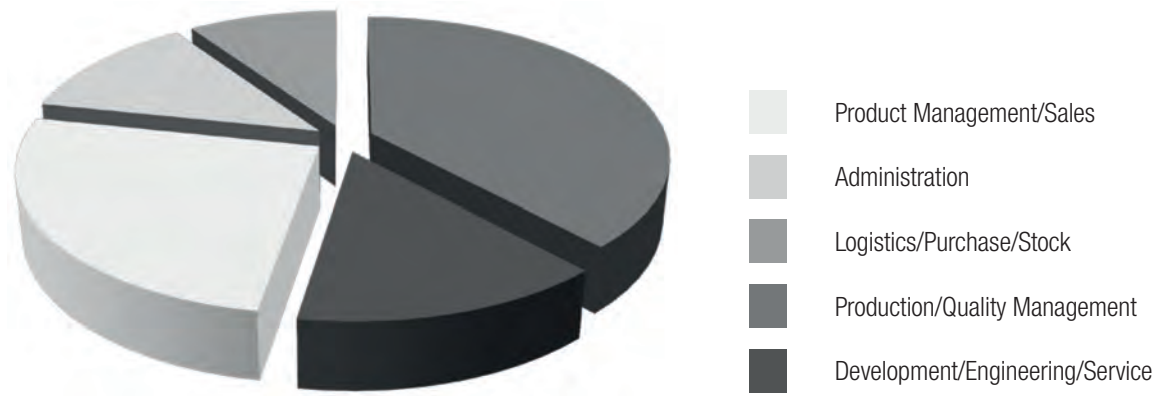
- Production & products liability
- Personnel indemnity
- Property
- Design
- Construction

Validity

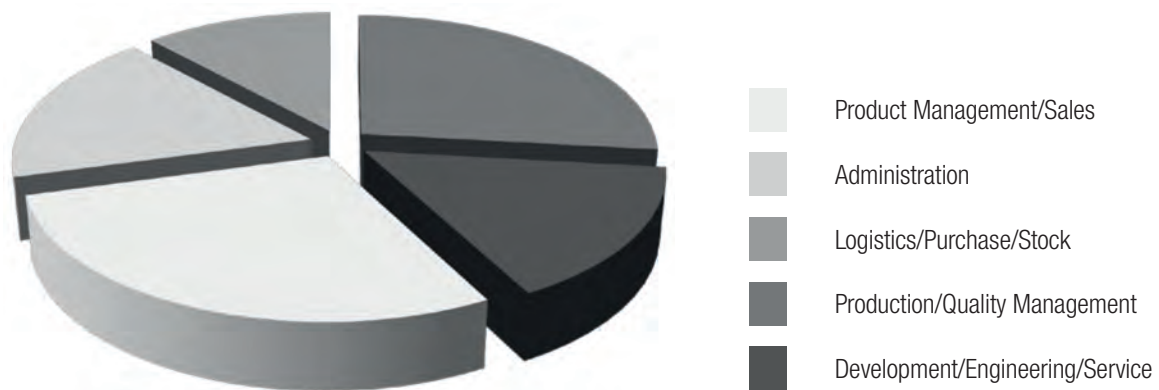
worldwide coverage

Employees 2016/2017

BARTEC Group worldwide



BARTEC Bad Mergentheim

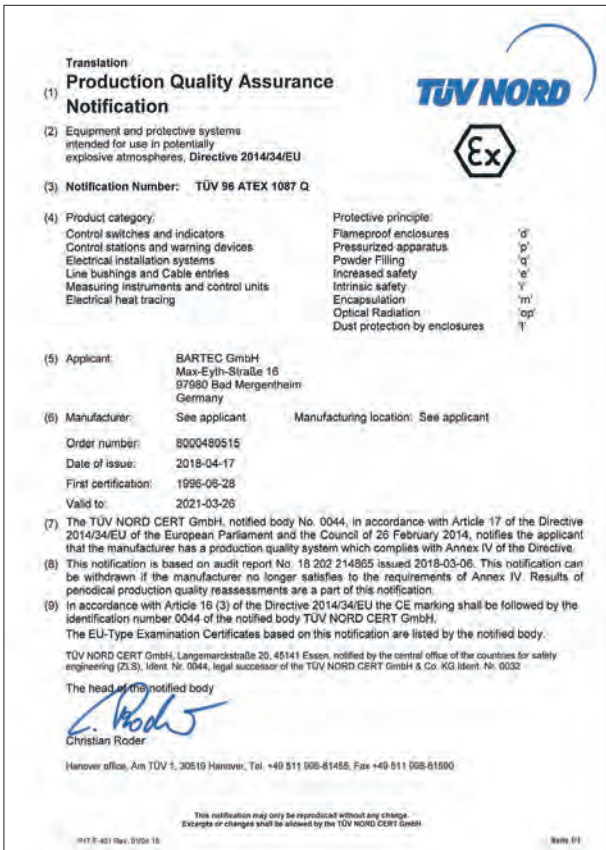




Valid until 03/22/2021



Valid until 03/22/2021



Valid until 03/26/2021



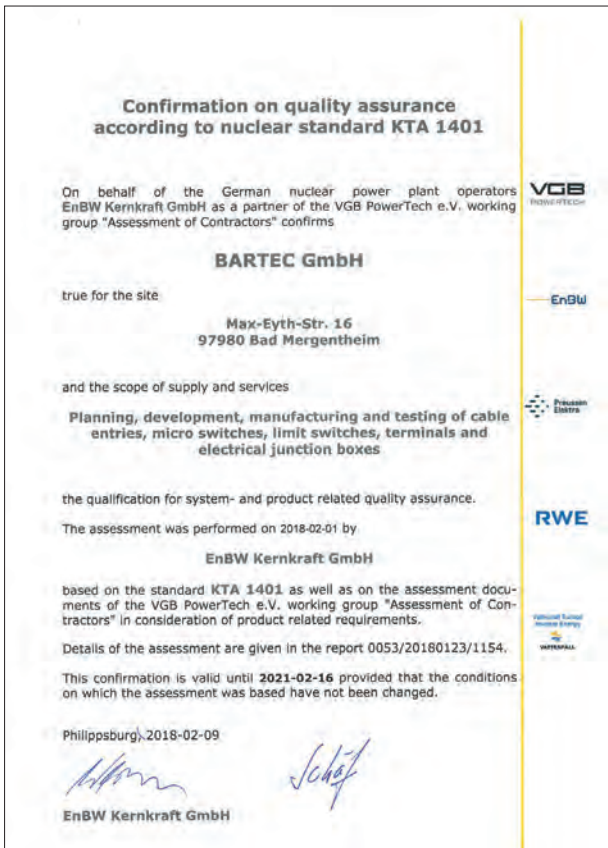
Valid until 05/23/2020



Valid until 03/22/2021



Valid until 12/21/2019



Valid until 02/16/2021

1. BARTEC is convinced that having healthy people in a healthy environment is an essential precondition for efficiency and the associated economic success and job security. The protection of health at the workplace, the prevention of accidents, safe production facilities and corporate environmental protection are fundamental goals for us therefore.
2. BARTEC promotes the awareness of environmental and health issues.
3. BARTEC avoids environmental pollution and work-related health risks.
4. BARTEC integrates the employees in the management of ideas on the prevention of accidents and damage, the improvement of health care and the protection of health and the environment.
5. BARTEC engages in an open dialogue with employees, the public, the employers' liability insurance association (BG) and the authorities.
6. BARTEC obligates all executive, senior and junior employees to observe at all times the statutory regulations and company rules on environmental protection and occupational safety. They are expected to protect their own health and that of the other employees. In all activities for the company, they should take care to avoid pollution, accidents and work-related illnesses. The management provides them with the means necessary to do so.
7. BARTEC establishes all the international and national regulations for safety and the protection of health and the environment that are relevant for the company, the employees, machinery, systems, processes and activities. The most important statutory and other regulations on the protection of the environment and workplace safety are available on the BARTEC intranet.
8. The management of BARTEC continuously monitors all activities with respect to their effects on workplace safety and the protection of health and the environment and places great value on the constant improvement of effectiveness and efficiency.

The following section specifies some programs which support, promote and constantly improve environmental protection, workplace safety and health protection at BARTEC.

1. Collection of environmental data

BARTEC records all data of relevance to the environment, such as the consumption of paper, water, electricity and gas and the disposal of commercial and special waste and uses this data to derive improvement and savings potential.

2. Waste management strategy

In its waste management strategy, BARTEC sets out its approach to waste management, covering the avoidance, origin, storage and finally the disposal of waste. BARTEC recycles reusable waste, such as metal, paper, plastics and foil. BARTEC works only with certified waste disposal companies.

3. 5S program

The 5S program at BARTEC covers among other things the avoidance, separation and recycling of waste and cleanliness at the workplace.

4. Hazardous materials

BARTEC has listed all hazardous materials in a hazardous material database, divided into protection classes in conformance to the Ordinance on Hazardous Substances, and has drawn up instructions on how they are to be handled. Risk assessments and training courses for employees are conducted regularly. Water-polluting substances are stored and transported exclusively on suitable and tested drip pans. For this purpose, BARTEC has produced a strategy for handling water-polluting substances. Hazardous substances are consistently substituted by substances with a lower protection class rating. The quantities of the hazardous materials at the workplaces were reduced and tested cabinets specially for hazardous substances are used for storage.

5. Resource conservation

We collect rain water in a cistern and use it as service water for flushing toilets. Packing materials and fillers from incoming goods are reused for outgoing goods.

6. Measurement of emissions

We regularly measure emissions in co-operation with the employers' liability insurance association (BG).

7. Appointees

BARTEC appoints qualified employees to implement key tasks, such as for example the management of waste and the co-ordination of hazardous materials.

1. Safety committee

every three months, the safety committee discusses themes of relevance to industrial safety and makes decisions on the improvement of workplace safety and health protection.

2. Company inspections

are conducted regularly in co-operation with the employers' liability insurance association and our company doctor.

3. Preventive medical checkups

all preventive medical checkups that are required and are of relevance to our employees are conducted regularly by our external medical care service.

4. Pollution measurements

The employers' liability insurance association measures pollutants regularly and as required at relevant workplaces and monitors the observance of workplace exposure limits (AGW).

5. Explosion protection document

BARTEC has divided work areas into explosion prevention zones and recorded them in the explosion prevention document.

6. Inspections in accordance

BARTEC regularly conducts inspections in accordance with the regulations set with the regulations set by DGUV by the employers' liability insurance association, such as for example the inspection (employers' liability of all mobile electric operating equipment and the testing of ladders and steps. (insurance association)

7. Risk assessments

To define suitable preventive measures, BARTEC conducted risk assessments at the workplaces in conformance to the German Occupational Health and Safety Act.

8. Instructions

Our employees receive instruction regularly and when there are alterations in any points relevant to them in workplace safety and health.

9. Appointees

BARTEC appoints employees to the specialist implementation of assignments such as for example: first aiders, safety officers, safety specialists, fire prevention officers and radiological safety officers, who support, promote and constantly improve the safety and environmental protection plan.

Bad Mergentheim, 05/15/2018

Andreas Lucas
Head of Quality, Environment, Energy
and Work Safety Management

Steve Hübner
Quality Representative/Health and Safety Officer

BARTEC

Your partner
for safety
technology.
Challenge us!

