

Quad sampler, type 6900-20

Online sampling during milk collection

- Four samples simultaneously
- Continuous sampling
- Peristaltic principle
- Minimum carry over
- High representativity
- Tamper-proof sample locking
- Inline sampling
- Easy cleaning
- Clear design
- Compact unit
- Large dynamic range



Description/function

The Quad Sampler, type 6900-20, can carry out online sampling by drawing up to four samples simultaneously from the collection pipe. It is equipped with four stepper motors; each one drives a peristaltic pump. The speed of the pump is calculated from the sample volume, the collection volume and the relevant volume flow. From the three factors the control electronics, type 6970-30, generates a variable pump speed, which is proportional to the volume flow and so fills a highly representative sample into the sample vial.

Feed and withdrawal of the sample vial are manually.

In the bottom area of the sampling device there is the option to mount the TAG reader 6900-101 which is able to continuously read out and write on the TAG in the bottom area of the sample vial. This guarantees a unique assignment of the sample vial, which is recorded by the evaluation electronics. The central computer controls the complete sampling sequence, by writing default data into the control electronics, type 6970-30, and retrieving status data. Due to the structural design and a patented rinsing method, there is only a minimal carry over.

Application

The sampling system is suitable for online sampling during milk collection. In connection with a flowlevelmeter type 6826 it is able to generate a representative sample for different collection quantities and different collection modalities.

The intake quantity, out of which an invariable sample quantity of approx. 40 ml is drawn, can be in the range from 400 l to 30.000 l. The system also makes possible to generate a representative load sample as well as a spot check.

The four samplers work simultaneously.

Technical data

Device-specific data

Nominal operating temperature 23 ± 2 °C

Electrical data - Sampler control

Auxiliary energy	24 ... 36 V	Supply from two Sampler Controller, for example type 6970-30
Power consumption	max. 4 x 4 A	
Step frequency	max. 10 kHz	
Number of samplers	4	
Galvanic separation	None	
Cable length	max. 2,5 m	
Connection	2 cables, 10 x 0.5-wire, shielded	

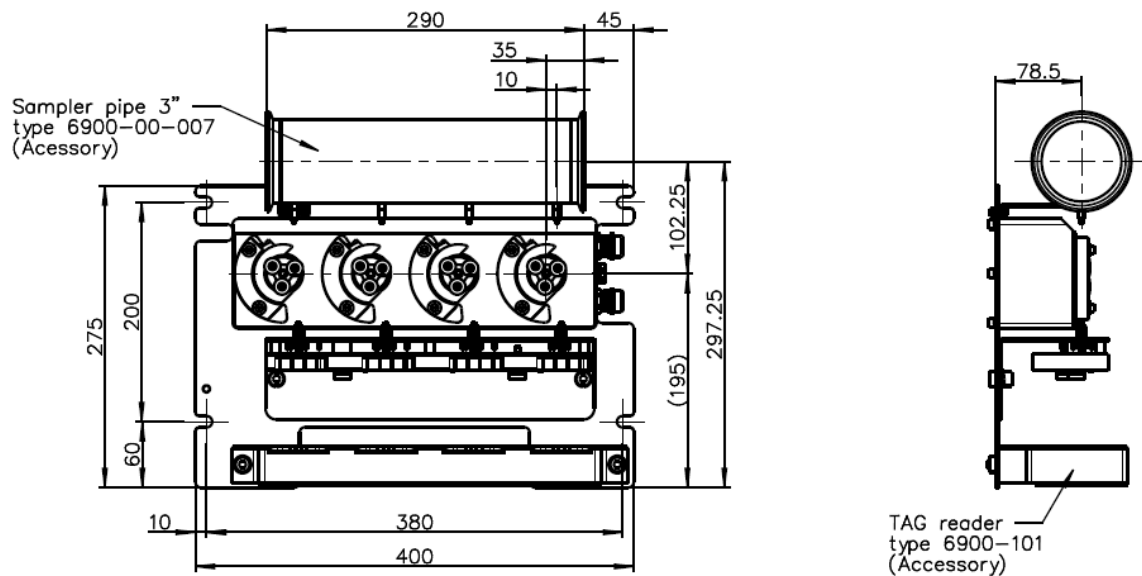
Ambient conditions

Operating temperature	- 10 ... + 50 °C
Storage temperature	- 20 ... + 70 °C
Protective type	IP 65

Mechanical data

Dimensions	See drawing
Materials that have contact to milk	1.4301, silicone flexible tube
Weight	Quad Sampler 6900-20: 8,3 kg

Dimensions



Ordering details

Designation	Order no.
Quad sampler, type 6900-20	279 874
Accessory	
Sampler pipe 3", type 6900-00-007	235 920
TAG reader, type 6900-101	240 074