

ULTRASAMPLER® Manual lifting device for sample bottle type 6871-3-30 / type 6871-4-30

The manual lifting devices for sample bottles type 6871-3-30 resp. type 6871-4-30 is an inexpensive device for bottle positioning in the milk sample filling on the collecting vehicle. It will be used in conjunction with the sampling system ULTRASAMPLER® and is particularly suitable there, where incurred only a few samples during the collecting tour. The supply of the empty sample bottles and their transport in the filling position as well as the storage of the filled sample bottles, will be done by hand. With the help of an operating lever, the manual sample bottle lifting device lifts the samples bottles up. The manual sample bottle lifting device is screwed onto the sampler and is mounted under the peristaltic pump. In the filling position, the injection needle of the sampler pierces the sealing plug of the sample bottle. The proximity switch, integrated in the lifting device, detects the filling position and allows control of the milk intake process.



Manual lifting device for sample bottle

- **Inexpensive device for bottle positioning during milk sample filling**
- **Low installation volume and easy installation**
- **Can be integrated into automatic sequence routine by signal feedback via proximity switch**

Inductive proximity switch

The inductive proximity switch can be provide as a hardware lock of the collecting pump. In the activated state (filling position), it switches on a relay, which releases the electrical control of the collecting tank pump

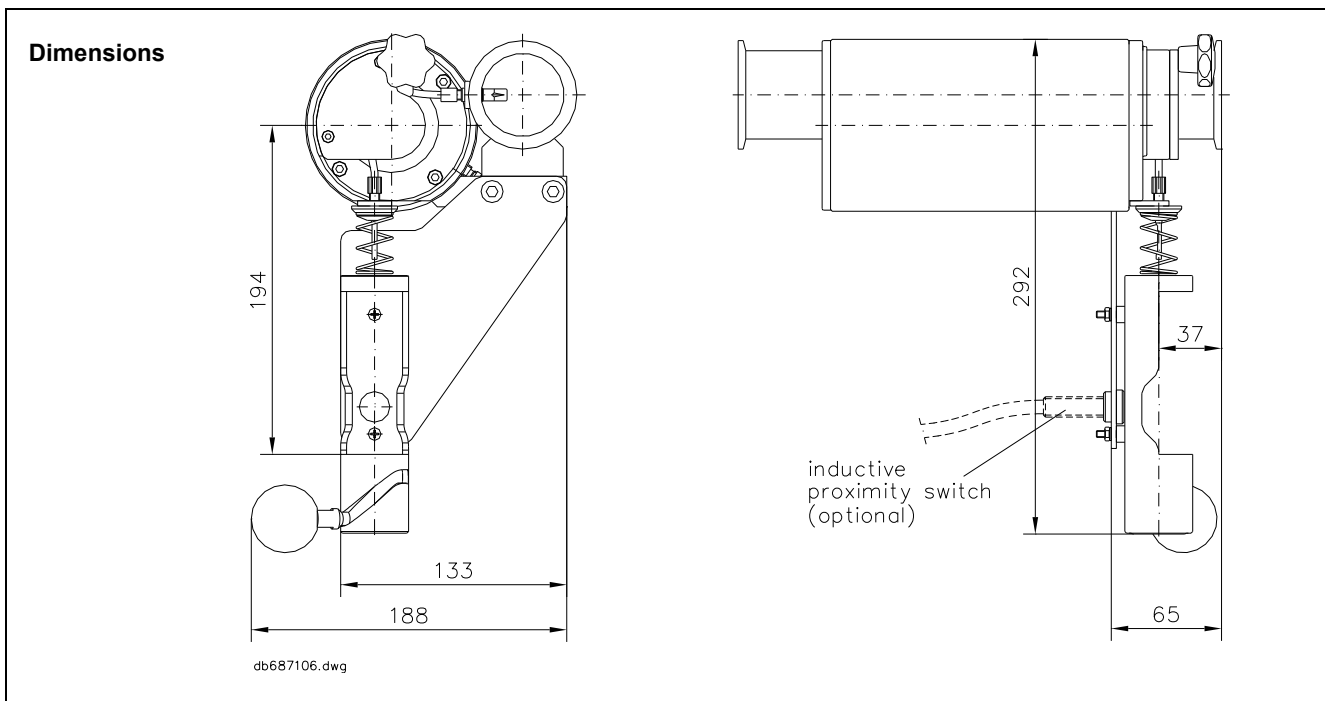
Executions

Accordingly of the sampler executions for flow direction from right and from left, there are also manual lifting devices of the types:

6871-3-30 for flow direction from right

6871-4-30 for flow direction from left

Technical Data	
Electrical data	
Operating voltage	24 V DC
Ambient conditions	
Operating temperature	-10 ... +50 °C
Store temperature	- 10 ... + 70 °C
Protective system	IP 68
Mechanical data	
Construction	Fixed and mobile parts made of stainless steel, sliding disks made of Teflon; inductive proximity switch is screwed in and tightened
Weight	ca. 7 N \cong 0,7 kg
Usable sample bottles	50 ml Sample bottles with triple slotted sealing plug



Order details	
Designation	Order number
Manual lifting device for sample bottles Flow from the right	U94416871330
Manual lifting device for sample bottles Flow from the left	U94416871430
Attachments	
Inductive proximity switch 2mm PNP M12 x 1	U496004
inductive proximity switch 2mm NPN M12 x 1	U495593