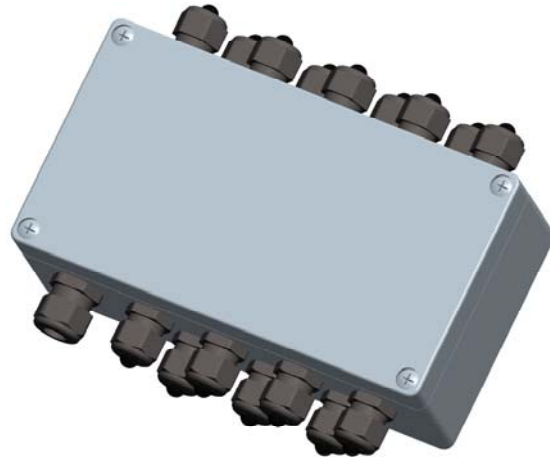


Terminal box 16x2, Ex e, type 6982-11

- Clamping points for additional wiring of I/O signals



Description

Terminal box with aluminium die-cast casing IP66 with clamping points to distribute the I/O connections of System 3003 FFB (aircraft refuelling).

Application

Terminal box can either be mounted in the tank truck or stationary. Cables are inserted by means of screw connections. Connection to basic module via a multi-pole cable.

Function

The terminal box serves as a clamping unit to extend the clamping space in System 3003 FFB (aircraft refuelling).

Technical data	
Device-specific data	
Nominal conditions	23 ± 2 °C
Nominal voltage	24 V DC
Nominal current max.	11 A
Electrical data	
Connection type	16 double series terminals with screw connection max. 1,5 mm ² 4 ground terminals max. 1,5 mm ² 16 cable glands ATEX M16x1,5 blk/wt clamping range 5 ... 10 mm 1 cable gland ATEX M20x1,5 blk/wt clamping range 6,5 ... 12 mm
Ambient conditions	
Operating temperature	-20 ... + 50 °C
Storage temperature	-20 ... + 70 °C
Protection type	IP66 in accordance with DIN 40050
Climatic class	JWF in accordance with DIN 40050
Mechanical data	
Weight	approx. 1,6 kg
Casing material	aluminium
Equipment group/-category/type of protection	II 2 G Ex e IIC T6 Gb
Certificate	PTB 00 ATEX 1063
Norms	EN 60079-0, EN 60079-7
Dimensions	220 x 120 x 80 mm
Dimensional drawing	
<p>The drawing consists of three views of the terminal box:</p> <ul style="list-style-type: none"> Front view: Shows the top and bottom rows of terminals. The width is dimensioned as 204 mm. The height of the box is dimensioned as 82 mm. Top view: Shows the front panel with 16 terminals. The width is dimensioned as 220 mm. Side view: Shows the depth of the box, which is dimensioned as 120 mm. The height is also dimensioned as 80 mm. 	
Ordering details	
Designation	Order no.
Terminal box 16x2, Ex e, type 6982-11	301743
Cable 24x0,5 shielded, petrol-resistant (not ready-made!)	U660021