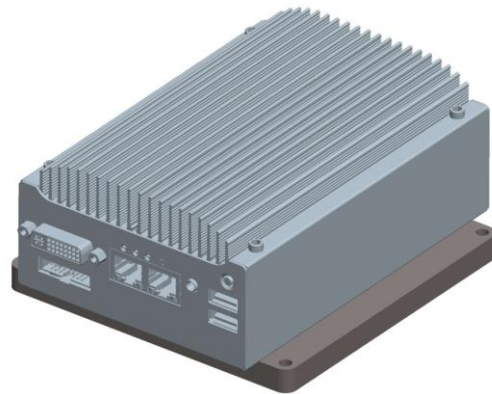


Control computer large leakage detection, Type 6953-10

The control computer is the link between the GLE server and the measuring system FFB 3003. The control computer takes the needed data from the measuring system FFB 3003 over a TCP / IP connection counter and provides them to the GLE server.



Application

The control computer in conjunction with the WLAN adapter type 6953-100 and the WLAN antenna sets type 6982-100/101 allows the data exchange between the measuring system 3003 and the dynamic large leakage detection GLE Version 2.0 of M+F Technologies GmbH.

Function

The control computer is the connection between the GLE server and the measuring system FFB 3003. The control computer takes the needed data from the measuring system FFB 3003 via a TCP / IP connection and provides them to the GLE server. The exchange of data between the controller and the GLE server is done via a wireless connection and based upon the OPC-DA protocol. In return, the control computer delivers informations about the WLAN Signal strength and connection to GLE server to the measuring system FFB 3003.

Features

- Windows 7 32-Bit
- GLE-Interface Version 2.0
- OPC-DA Version 2.0
- Gigabit Ethernet
- Compact construction
- -25°C ... +70°C

Technical data	
Specific data	
Voltage supply	8 – 35VDC
Power consumption	Typical: 7.68W (0,32A@24V) Full load: 13.44W (0,56A@24V)
Processor	Intel® Atom™ E3845 1.91 GHz quad-core
Random access memory	4GB
Memory	2.5" SATA SSD 128GByte
Ethernet	2x Gigabit Ethernet by Intel® I210 GbE controller
Serial	2x RS-232/422/485 (COM1 & COM3) 2x RS-232 (COM2 & COM4)
USB	3x USB 3.0 1x USB 2.0
Video	Analog RGB und DVI/HDMI, Max. resolution 2560x1600
Audio	1x Loudspeaker output
DIO	4x DI, 5V, TTL 4x DO, 5V, TTL
Connections	
Voltage	Terminal strip, 2-pole, pluggable
Ethernet	2x RJ45-socket
Serial	4x D-Sub socket, 9-pole
Video	1x DVI-I socket
USB	4x USB-socket, Type A
Audio	1x Jack socket
DIO	1x Tub connector, 16-pole
Ambient conditions	
Operation temperature	-25°C ... +70°C
Storage temperature	-40°C ... +85°C
Mechanical data	
Mounting method	Wall mounting
Weight	1.3kg
Dimensions	
Data for purchase order	
Designation	Order number
Control computer large leakage detection Type 6953-10	401905
Patch cable, 20m	400689
Plug RJ45	400715
Crimping tool	401906
Network cable tester	401907
Cable, voltage supply	U660102