

## Form Printer 24 V, 3003, Type 6863-20

- High-performance 24-pin dot-matrix printer for data captures in oil delivery applications.
- Powered directly by vehicle's on-board supply



### Description

This form printer registers and records measured values, nuisance values and other data and creates delivery notes, invoices, stock lists, summary vouchers and other documents.

The compact unit delivers high-quality printing and offers a wide range of design options.

The robust construction for mobile use and long-life print head are particularly advantageous.

Control of the printer, and also the document setup, is via the PETRO-DAT device. On-site operation then requires only a few simple actions.

### Features

- Interface for data transmission and control of printing (RS 232).
- Alphanumerical and graphical character sets.

- Multiple fonts and point sizes, various print effects and printing modes for complex documents. Includes 9 calligraphy fonts, narrow and wide fonts, italic, bold and shadow printing, etc.
- Draft mode for fast printing, speed up to 480 characters per second.
- Graphics capable, resolution up to 180 x 360 dots per inch.
- Designed for single-sheet paper widths 102-267 mm and fanfold paper widths 102-216 mm.
- Single sheets are inserted from the top, fanfold paper from the front.
- Paper-saving automatic positioning. After the last printed page has been torn off, the printer automatically advances the next sheet to the starting position.
- Adjustable for different paper types, up to 3 duplicates, etc, ensuring reliable paper transport.

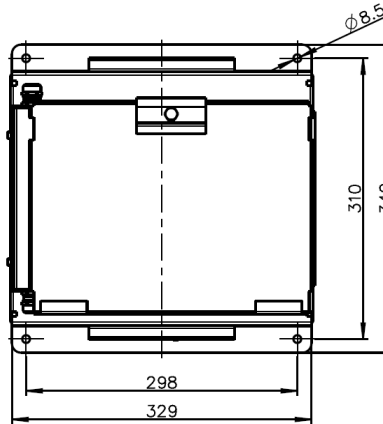
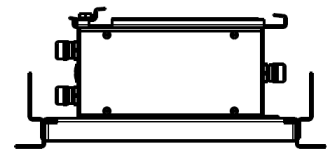
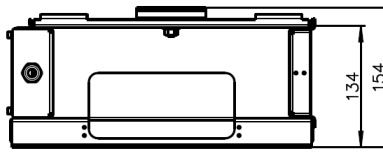
### Application

Universal dot-matrix printer for registration of measurements and data in oil deliveries.

- Creates invoices, delivery notes, stock lists and other documents.
- Versatile design options for customised documents.
- Software-driven preparation of reports.
- Fanfold and single-sheet paper.
- User-friendly
- Low noise output
- Designed for mobile use in delivery vehicle.
- E1 approval for use on delivery vehicle.

Technical Data	
<b>Device-specific data</b>	
Print format	Alphanumeric and graphical characters with 19 international character sets
Fonts	Roman, Sans-serif, Courier, Bold, Prestige, Script, Orator, Gothic, OCR-A, OCR-B; Barcodes: UPC/A, UPS/E, EAN8, EAN13, Code 39, Code 128, Interleaved 2/5, Industrial 2/5
Resolution	180 x 120 dpi (draft), 180 x 360 dpi (LQ)
Pitch	10 cpi (80 characters/line) 12 cpi (96 characters/line) 15 cpi (120 characters/line) 17.1 cpi (136 characters/line) 20 cpi (160 characters/line) 24 cpi (192 characters/line) (depending on emulation used)
Line spacing	3, 4, 5, 6, 8 lines per inch
Print head	24 pin; working life 250 million characters
Memory	64 kB
Standard printing language	IBM 2390+ (includes ProPrinter XL24E), Epson ESC/P2, Intermec 6820
Printing method	Serial dot-matrix
Printing speed	at 10 cpi: 400 characters/second (draft); at 12 cpi: 480 characters/second (draft); at 10 cpi: 133 characters/second (letter)
Paper	Plain and form sets Paper width: 102-167 mm Paper length: > 102 mm (fanfold); 76-364 mm (single sheet) Print width 216 mm max. Number of copies: 1 original + 3 duplicates
Paper weight	47 ... 81 g/m <sup>2</sup> (single sheet) 40 ... 64 g/m <sup>2</sup> (multi-copy forms)
Standard paper transport	Push tractor for fanfold paper, friction for single sheet, automatic advance to tear-off edge, parking position
Ink ribbon	Ribbon cartridge, black, 4 million characters
Interfaces	Serial interface (RS 232), USB 2.0 (full mode) Optional interfaces: Bluetooth (version 1.2), W-LAN (IEEE 802.11b/g)
<b>Electrical data</b>	
Input voltage	10.5 - 28 V DC, max. 10 A, connector for vehicle on-board supply; or AC adapter 100 - 240 V ± 10 %, 47-63 Hz, 3.2 A
Power consumption	Power Off mode: 0.3 W Sleep mode: 2.0 W Standby: 7.0 W Printing: max. 150 W
Printer driver	Windows 2000, XP (ESC/P2)
<b>Ambient conditions</b>	
Operating temperature	-20° C ... +60 °C
Storage temperature	-30° C ... +65 °C
Protection class	IP22
Climate class	JUF to DIN 40040
<b>Mechanical data</b>	
Dimensions	140 x 365 x 320 mm (H x W x D)
Weight	approx. 65 N (= 6.5 kg)

## Dimensions of printer mounting, type 6962-100



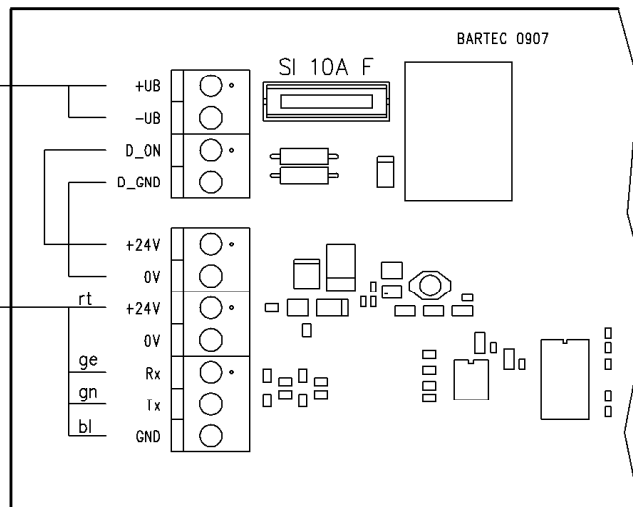
## Connection to printer mounting type 6962-100

direct supply from on-board power supply (Cable  $\geq 1.5\text{mm}^2$ )

Cable (O.No. U660102) from Controller

Connection:

Signal	Colour
+24V	red
Rx	yellow
Tx	green
GND	blue



290941.dwg

## Ordering details

Description	Order number
Form printer 24 V, 3003 type 6863-20	290938
<b>Accessories</b>	
Printer mounting type 6962-100	290939
Ribbon cartridge, black (MIP480-KA)	291897