

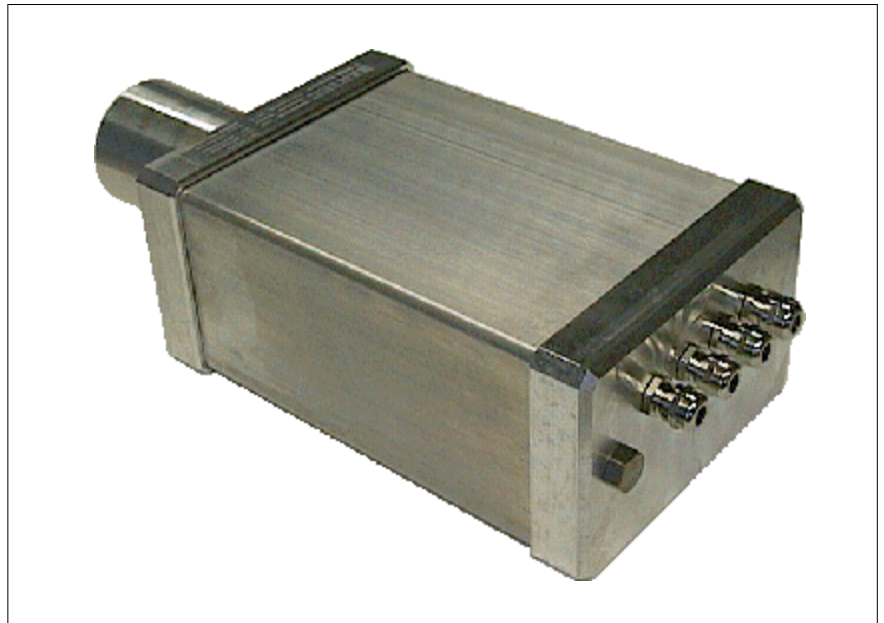
Data Sheet

Additive Unit Type 6775-11

The additive unit type 6775-11 is designed for the automatic and environment-friendly injection of additives during the delivery of heating oil and Diesel. Additives are flow enhancers (antifreeze), soot inhibitors, combustion catalysts and the like.

The additive unit works in conjunction with the data acquisition system PETRO-COMP 3001 or PETRO-DAT 3002. It is to be used solely in the A3 zone and only with A3 products as additives.

Using two non-return valves the additive is injected into the main product line. The additive unit is suitable for both stationary and mobile duty. It is possible to install several additive units per main volume counter.



Pump system

The used materials make the pump resistant against most of the common additives. The pump system is easily accessible for service purposes.

Monitoring devices

For a safe protection from a dry run of the pump and for monitoring the additive tanks an external detector has to be connected to the unit. A dry run will cause a breakdown to the pump. Suitable are swim type switches (inoperative opened) or capacitive proximity switches (3-wire, minus-switching) with 12 V supply voltage or the level sensor type 6729-22.

Electrical connection

The cable is connected to screw-type terminals in the connection lid. The connection lid is pluggable connected and screwed to the rest of the module.

Order Designations

Additive unit, non-calibrated type
6775-11
Order no. U891 1700 677511

Accessories

Return valve 0,2 bar
(for OUT connection of the additive unit)
Order no. U495557

Return valve 0,2 bar
(for the injection spot of the additive)
Order no. U495556

Level sensor, optical type 6729-22
Order no. U891 1 672922

Y-shaped fitting for level sensor
Order no. U05008027

Threaded joint G1/2"
(for connecting the y-shaped fitting with
seamless steel tube 12 x 1 mm)
Order no. U496474

Threaded joint G3/8"
(for steel tube 12 x 1 mm, for connecting
the suction pipe to the additive unit)
Order no. U496475

Device for the automatic and environment-friendly additive injection

- Optimal mixing of the product by continuous additive injection during mineral oil delivery
- Can be used in conjunction with PETRO-COMP 3001 and PETRODAT 3002 system
- Input for level sensor
- Long-life by sturdy construction

Technical Data

Pump system

max. delivery rate: 2 l/min,
 max. pressure rate: 2 bar,
 additive viscosity min.: 2 mPa * s,
 additive viscosity max.: 30 mPa * s,
 accuracy: ±5 % volumetric,
 (at max. 1 bar counter pressure)

Connections

inlet: thread holes 3/8",
 connection lead: $d_i \geq 10$ mm,

outlet: thread holes 1/4",
 connection lead: $d_i \geq 6$ mm.

Auxiliary energy

voltage supply for electronics:
 DC 24 V +20 % -15 % (I < 250 mA)

voltage supply for driving motor:
 DC 24 V ±20 % (I < 10 A).

Electrical connection

internal screw-type terminals,
 wire diameter $\leq 2,5$ mm²,
 cable routing via 3 x PG9 and 1 x
 PG13,5 glands.

Interface

fieldbus interface (P-NET),
 P-NET ID-no.: 5929.

Housing

rugged aluminium case, unlacquered,

dimensions: 174 x 114 x 398 mm,
 type of protection: IP65.

Weight

approx. 8,2 kg.

Mounting

fixing possible with 3 M10 thread bore
 holes,
 horizontal installation.

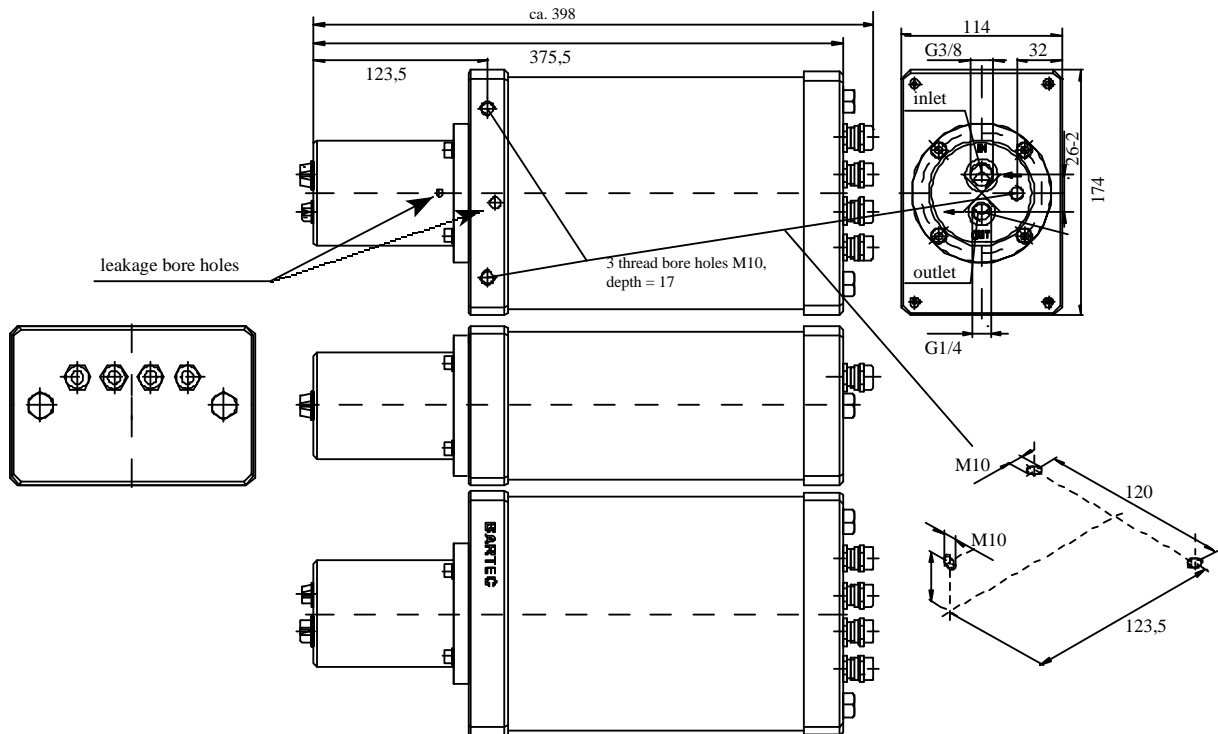
Materials which come in contact with the additive:

aluminium, steel, POM, FKM.

Ambient conditions:

operating temperature: -20 ... +50 °C,
 storage temperature: -25 ... +60 °C,
 climatic class: JWF accord. to DIN 40040.

Dimensions



Wiring

