



- AC 230 V control/supply voltage
- Can be snapped on DIN rail
- Switching capacity  
AC 230 V, 20 A
- Display: supply voltage,  
heating on

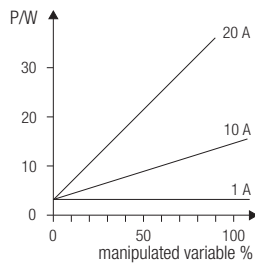
The DEC is an adjustable energy controller. It allows perfect adaption of the power output from 10 % to 100 % in 10 %-steps. Combined with the DPC-Family, the DTL III Ex and Pt100 Ex, the DEC can also be used to control heating systems in hazardous (potentially explosive) areas.

**Technical data**

Protection class	IP 20
Min. ambient temperature	0 °C
Max. ambient temperature	+40 °C
LED displays	Supply voltage ON Heating ON
Mounting	snaps onto TS 35 (DIN rail)
Enclosure material	ABS plastic
Dimensions (without heat-sink)	L x W x D (105 mm) 164 mm x 90 mm x 59 mm
Weight	520 g

**Electrical data**

Rated voltage	AC 230 V/50 Hz
Switching capacity	max. switched current AC 20 A max. voltage AC 250 V min. AC 230 V min. 50 mA
Control	AC 230 V
Adjustable power output	from 10 % up to 100 % in steps of 10
Terminals	2.5 mm <sup>2</sup> solid or 1.5 mm <sup>2</sup> stranded with sleeve
Power dissipation	dependent of the manipulated variable



**Structure**

The DEC case can be snapped onto a DIN rail allowing quick and easy installation. The energy controller is energised via 230 V mains supply voltage. The terminals can accommodate conductors with a cross section of up to 2.5 mm<sup>2</sup>. DEC control via AC 230 V. The front fascia of the case provides a 10-step switch for the power adaption from 10 % to 100 %. An LED on the front fascia indicates whether supply voltage is applied to the DEC. A second LED signals an active/non active DEC output.

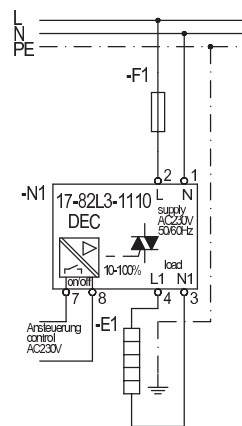
**Function**

The DEC is controlled via a AC 230 V supply periodic group control is activated via a 10-step switch and the output power of the DEC adjusted from 10 % to 100 %.

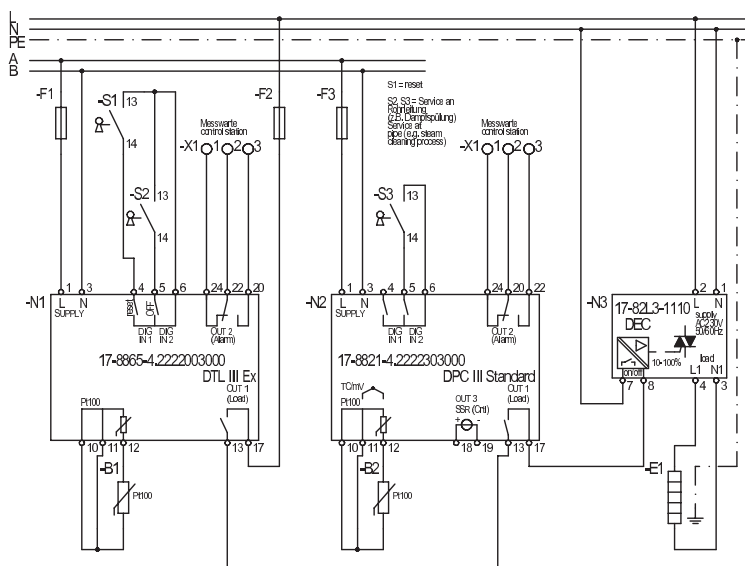
**Additional products**

- DPC III, Digital programmable controller, Type 17-8821-4.22/22303.00
- DTL III Ex, Digital temperature limiter, Type 17-8865-4.22/22003000
- Pt100 Ex, explosion protected, Type 27-71...-13.....

**Circuit diagram**

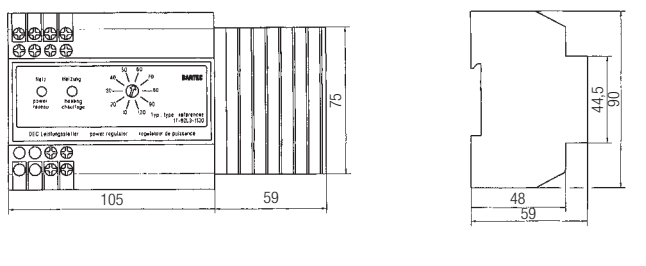


System circuit diagram



2

Dimensions (mm)



Ordering information

Digital energy controller DEC

17-82L3-1110

Technical data subject to change without notice.