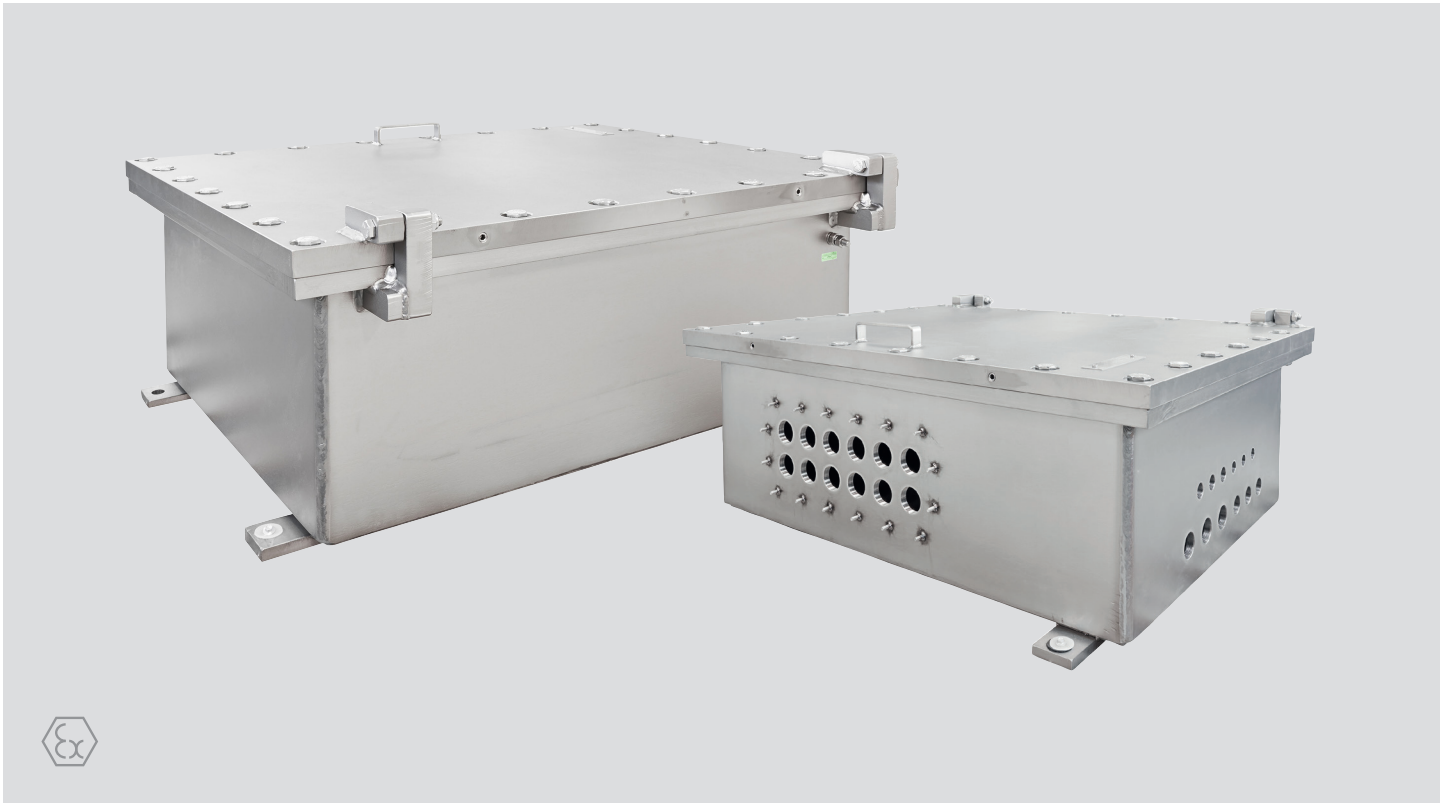


Flameproof Enclosures DE8BC

Datasheet



The DE8BC range comprises many standard sizes of enclosures manufactured in stainless steel 316L. The enclosures allow for utilization of standard electrical components inside.

Thus subsequent replacement and maintenance of the installed components is easy, and may be performed by skilled electricians. If required, several enclosures may be assembled on a framework, with separate or common Ex e/i junction boxes. The enclosures can be delivered empty with U-component certificate or supplied fully assembled according to client demands.

- Flexible product range with many standard sizes and up to 36kVAC
- Ingress protection IP 66
- Suitable for demanding environments
- Wide temperature range (-40 °C to +60 °C)
- Several earthing alternatives
- May be used with a Ex e/i connection box
- Window in lid/door may be fitted
- Simplified inspection routines with extended intervals

Applications

Junction box, control station, uninterrupted power supply, transformer, distribution board, motor starter, umbilical splitter box.



Explosion protection

| | |
|---------------------|--|
| Marking | ⊕ II 2 G/D or 2(1)G/D and EPL Gb/Db Ex db IIB +H2 T4 to T6 Gb Ex db [ia] IIB +H2 T6 Gb Ex tb IIIC T85 °C to 135 °C Db |
| Certification ATEX | INERIS 09ATEX9017U INERIS 09ATEX0061X |
| Certification IECEx | IECEX INE 13.0001U IECEX INE 13.0088X |
| INMETRO | DNV 16.0017X |
| EAC | TC RU C- NO.ГБ08.B.02030 |
| Directives | EN/IEC 60079-0, EN/IEC 60079-1, EN/IEC 60079-31 |

Other approvals and certificates, see bartec.com

Technical Data

| | |
|-------------------|----------------------|
| Material | Stainless steel 316L |
| Protection class | IP 66 |
| Temperature | -40 °C to +60 °C |
| Surface treatment | shot blasted |
| Earthing | M10 |

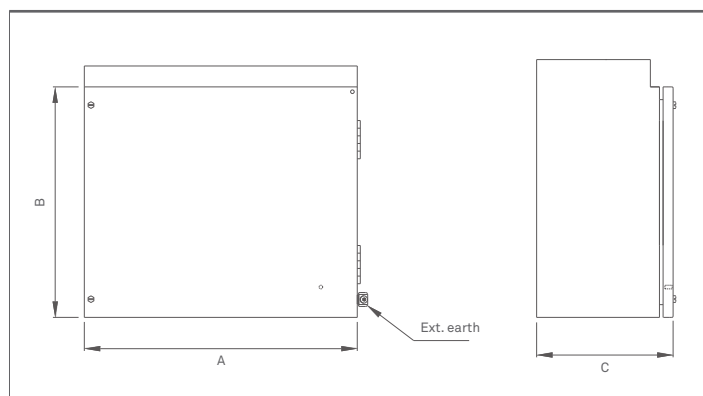
External dimensions

Ex d IIB Explosion proof enclosures

| | Width A (mm) | Height B (mm) | Depth C (mm) | Useful depth C1 (mm) | External fixing H1 x L1 (mm) | Diameter of fixing holes (mm) | Mounting plate size (mm) | Max. heat dissipation W (mm) | Weight (kg) |
|------|--------------|---------------|--------------|----------------------|------------------------------|-------------------------------|--------------------------|------------------------------|-------------|
| 32 | 338 | 438 | 261 | 192 | 234 x 326 | Ø 12 | 230x330x3 | 250 | 74 |
| 32D | 338 | 438 | 471 | 403 | 234 x 326 | Ø 12 | 230x330x3 | 250 | 87 |
| 351 | 358 | 478 | 261 | 192 | 274 x 346 | Ø 12 | 255x380x3 | 250 | 85 |
| 351D | 358 | 478 | 471 | 403 | 334 x 346 | Ø 12 | 255x380x3 | 250 | 98 |
| 43 | 438 | 538 | 321 | 252 | 334 x 426 | Ø 12 | 330x430x3 | 380 | 122 |
| 43D | 438 | 538 | 472 | 403 | 334 x 426 | Ø 12 | 330x430x3 | 380 | 145 |
| 44 | 548 | 548 | 323 | 252 | 334 x 526 | Ø 20 | 430x430x3 | 380 | 155 |
| 44D | 548 | 548 | 476 | 405 | 414 x 526 | Ø 20 | 430x430x3 | 380 | 182 |
| 54 | 548 | 648 | 323 | 252 | 414 x 526 | Ø 20 | 430x530x3 | 410 | 180 |
| 54D | 548 | 648 | 476 | 405 | 514 x 526 | Ø 20 | 430x530x3 | 410 | 204 |
| 64 | 548 | 748 | 323 | 252 | 514 x 526 | Ø 20 | 430x630x3 | 470 | 205 |
| 64D | 548 | 748 | 476 | 405 | 614 x 526 | Ø 20 | 430x630x3 | 470 | 238 |
| 75 | 668 | 868 | 332 | 253 | 614 x 630 | Ø 20 | 530x730x3 | 600 | 319 |
| 75D | 668 | 868 | 486 | 405 | 714 x 630 | Ø 20 | 530x730x3 | 600 | 361 |
| 86 | 768 | 968 | 378 | 297 | 714 x 734 | Ø 20 | 630x830x3 | 600 | 447 |
| 86D | 768 | 968 | 493 | 407 | 908 x 734 | Ø 20 | 630x830x3 | 600 | 510 |
| 107 | 868 | 1168 | 400 | 309 | 908 x 868 | Ø 20 | 730x1030x3 | 1200 | 660 |
| 108 | 868 | 1168 | 435 | 344 | 908 x 868 | Ø 20 | 730x1030x3 | 1400 | 675 |
| 108D | 868 | 1168 | 500 | 409 | 908 x 868 | Ø 20 | 730x1030x3 | 1400 | 725 |
| 148 | 944 | 1594 | 509 | 417 | 1200x900 | Ø 20 | 780x1430x3 | 2000 | 1110 |

Dimension tolerance: ± 5 mm

Dimensions

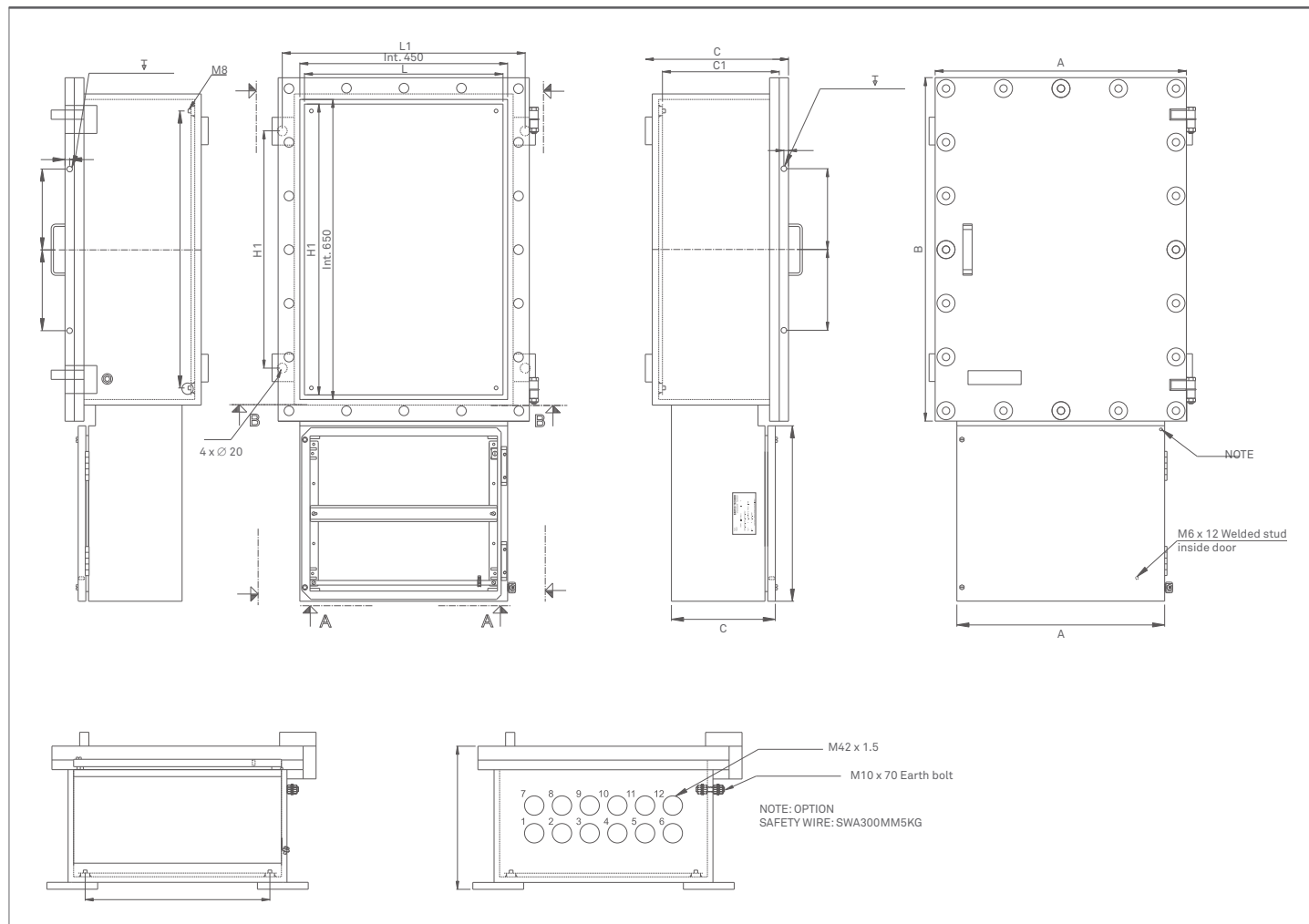


Assembly possibilities between DE8BC and TNCN

| | DE8BC.. | | | | | | | | |
|-------------|---------|----|----|----|----|----|-----|-----|-----|
| | 43 | 44 | 54 | 64 | 75 | 86 | 107 | 108 | 148 |
| TNCN 354522 | x | x | x | x | x | x | x | x | x |
| TNCN 453822 | | x | x | x | x | x | x | x | x |
| TNCN 575727 | | | | | | x | x | x | x |
| TNCN 767632 | | | | | | | x | x | x |

x: possibility of combination

Dimensions



External dimensions

Ex e II Increased safety enclosures

| | Width A (mm) | Height B (mm) | Depth C (mm) | No. of command/ signal unit | No. of Ammeter | Max. heat dissipation W (mm) | Weight (kg) |
|--------|-----------------|------------------|-----------------|--------------------------------|-------------------|------------------------------------|----------------|
| 354522 | 350 | 450 | 200 | 9 | 2 | 25 | 6 |
| 453822 | 450 | 380 | 220 | 18 | 4 | 42 | 8 |
| 575727 | 570 | 570 | 270 | 40 | 4 | 72 | 13 |
| 767632 | 760 | 760 | 300 | 108 | 5 | 120 | 22 |

Dimension tolerance: ± 5 mm