



## Cable gland

## Description

The cable gland made of polyamide is used for inserting permanent cables and leads into electrical equipment with the increased safety "e" type of explosion protection. The cable glands conform to the protection class IP 66/68.

For intrinsically safe circuits the cable entries are available with a blue cap nut.

When this cable gland is used, the instructions given in the type examination certificate/operating instructions must be observed.

## Explosion protection

## Ex protection type

Ex II 2G Ex e II  
Ex II 2D Ex tD A21 IP 68

## Certification

PTB 05 ATEX 1068 X  
BVS 11 ATEX E074 X

## Operating temperature

-40 °C to +75 °C

## Technical data

## Material

Polyamid, self-extinguishing

## Seals

EPDM

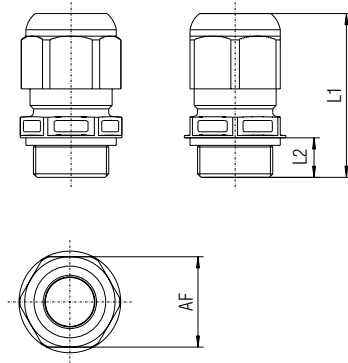
## Colour

RAL 9005, black  
RAL 5015, blue

## Protection class (EN 60529)

IP 66/IP 68

## Dimensions



## Selection chart

Thread size	Cable range (∅)	Across flat (AF)	Thread length (L2)	Length in mm (L1)	Unit	Order no.
<b>Cable gland Ex e, black</b>						
M12 x 1.5	3 - 6	16	15	35 - 45	50	03-6062-0137
M16 x 1.5	4.5 - 9	20	9	31 - 37	50	03-6062-0126
M20 x 1.5	7 - 13	24	10	36 - 45	50	03-6062-0127
M25 x 1.5	7 - 12	29	10	38 - 47	50	03-6062-0128
M25 x 1.5	10 - 17	29	10	38 - 47	50	03-6062-0136
M32 x 1.5	13 - 21	36	12	42 - 51	25	03-6062-0129
M40 x 1.5	17 - 28	46	12	52 - 65	10	03-6062-0130
M50 x 1.5	23 - 35	55	14	59 - 72	5	03-6062-0125
M63 x 1.5	31 - 48	68	15	64 - 78	1	03-6062-0131
Cable glands Ex e black, with long connection thread on request..						
<b>Cable gland Ex i, with blue cap nut</b>						
M12 x 1.5	3 - 6	16	15	35 - 45	50	03-6065-0074
M16 x 1.5	4.5 - 9	20	9	31 - 37	50	03-6065-0066
M20 x 1.5	7 - 13	24	10	36 - 45	50	03-6065-0067
M25 x 1.5	7 - 12	29	10	38 - 47	50	03-6065-0068
M25 x 1.5	10 - 17	29	10	38 - 47	50	03-6065-0073
M32 x 1.5	13 - 21	36	12	42 - 51	25	03-6065-0069
M40 x 1.5	17 - 28	46	12	52 - 65	10	03-6065-0070
M50 x 1.5	23 - 35	55	14	59 - 72	5	03-6065-0071
M63 x 1.5	31 - 48	68	15	64 - 78	1	03-6065-0072



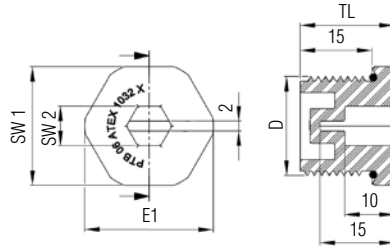
Screw plugs

Description

Screw plugs for closing unused boreholes in enclosures for the hazardous area in accordance with EN 60079-0 and EN 60079-7.

For assembly purposes the outer shape and internal recess of the screw plug head are hexagonal.

Dimensions



Explosion protection

Ex protection type

- Ex II 2G Ex e II
- Ex II 2D Ex tD A21 IP 68

Certification

- PTB 06 ATEX 1032 X
- BVS 11 ATEX E073 X

Technical data

Protection class

IP 68

Material

- Body polyamide
- O-ring EPDM
- Operating temperature -40 °C to +75 °C
- Colour black

Selection chart

D (mm)	SW* 1 (mm)	SW* 2 (mm)	E1 (mm)	TL (mm)	Nm	Order no.
M12 x 1.5	16	6	18	19	2	03-5210-0092
M16 x 1.5	20	8	22	19	2	03-5210-0085
M25 x 1.5	29	8	31	20	5	03-5210-0090
M32 x 1.5	36	8	39	20	5	03-5210-0091
M50 x 1.5	55	8	60	20	10	03-5210-0087
M63 x 1.5	68	8	73	20	10	03-5210-0088

\*AF = Across flat

Technical data subject to change without notice.