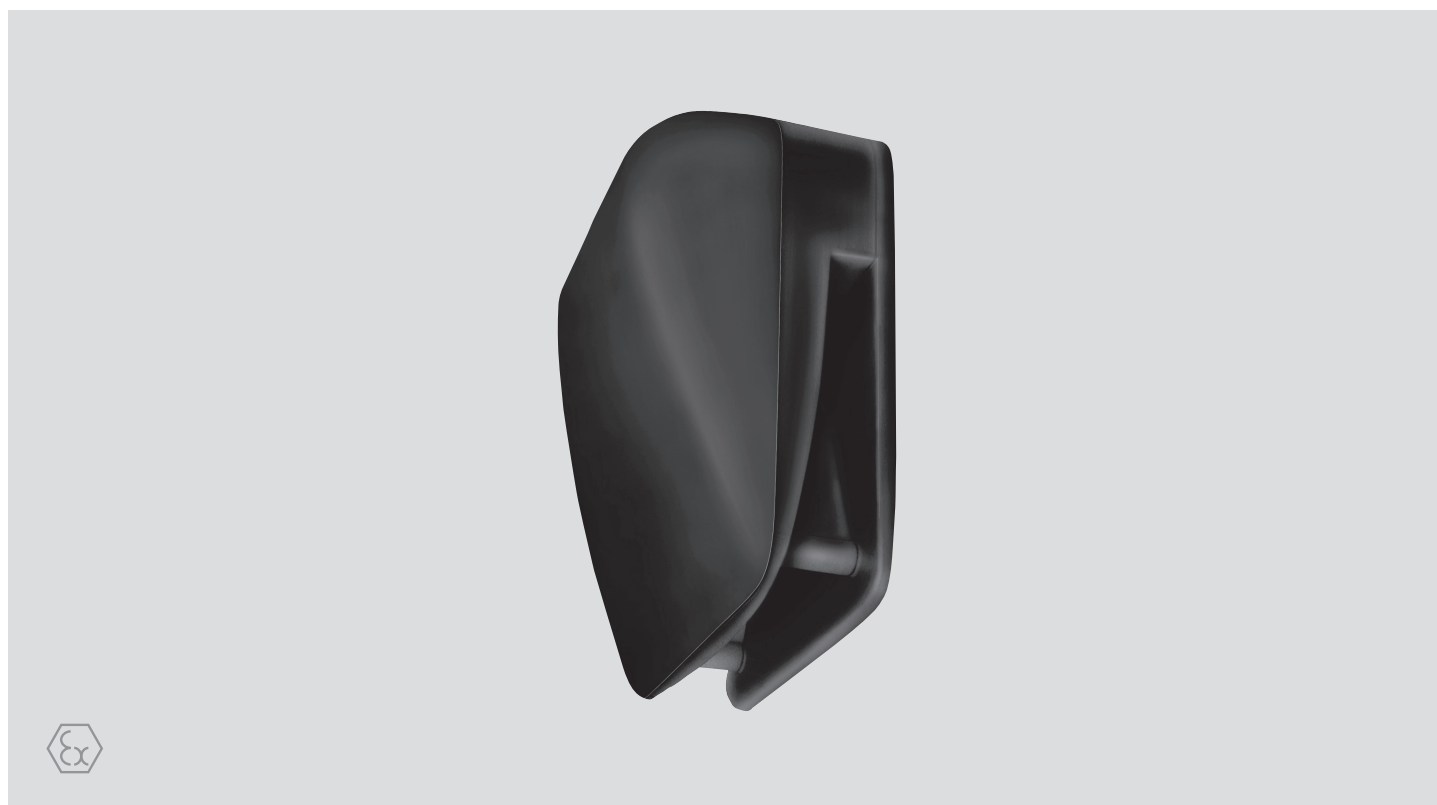


Signal horn

datasheet



Machines and equipment are provided with acoustic warning and emergency devices for the protection of people and the environment. These devices signal hazardous situations and thus allow for instant safety measures to be taken. BARTEC provides a loud signal horn with continuous tone in attractive design.

The device is suitable for applications in potentially explosive gas and dust atmospheres without further accessories. The signal horn reliably warns against hazards in a wide temperature range of -40 °C up to +50 °C outdoors and indoors.

- Set in Zone 1/21, Zone 2/22
- Protection class IP 65
- Sound level max. 105 dB
- Temperature range -40 °C to +50 °C
- Easy to install

Explosion protection

Marking ATEX	Ex II 2G Ex eb mb IIC T5 Gb Ex II 2D Ex tb IIIC T70 °C Db
Certification	BVS 03 ATEX E 118X

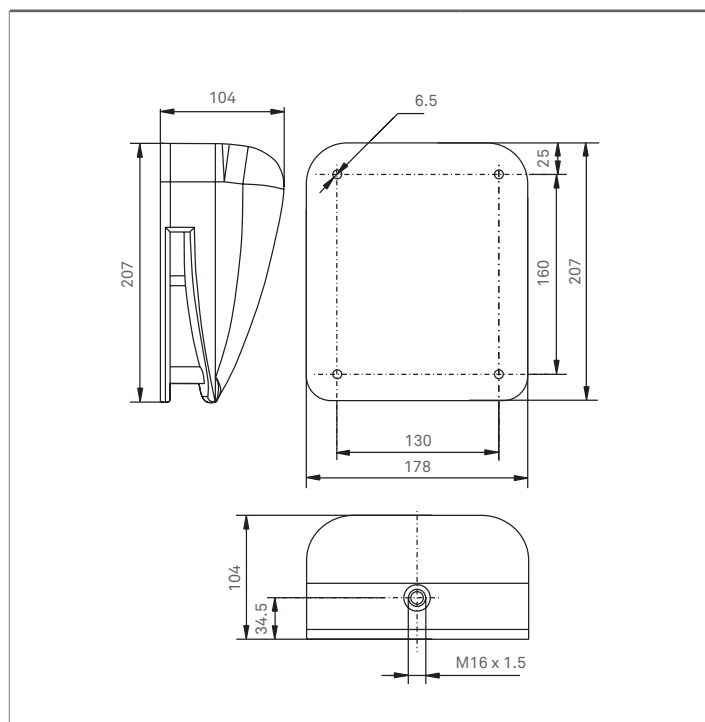
Technical data

Dimensions	207 mm x 178 mm x 104 mm
Mounting dimensions	160 mm x 130 mm
Enclosure	PC
Connection	terminal screw max. 2.5 mm ²
Cable entry	cable gland M16 x 1.5 cable diameter 5 to 9 mm
Mounting	wall mounting and floor mounting

Electrical data

Rated voltage	see selection chart
Sound level	max. 105 db (A)
Type of tone	continuous tone

Dimensions in mm



Ordering information

0 3 - 9 6 0 0 - 1 0 1 *

A

A	Rated voltage
	5 – DC 24 V
	6 – AC 24 V, 50 Hz
	7 – AC 42 - 48 V, 50 Hz
	8 – AC 115 V, 50/60 Hz
	AC 120 V, 60 Hz
	9 – AC 230 V, 50 Hz

Please insert correct code.