

RLA^{net} Monitoring unit with locating



- Quick and precise localization of the leakage location
- Modbus RTU integration into the building surveillance
- Can be combined with sensor and point sensor

The monitoring unit RLA^{net} is a component of the BARTEC Water leakage detection system. It is operating with the sensor cable SCR and/or the point sensor PS. Further components of the BARTEC Water leakage detection system are the monitoring units RLW, RDW 03 and RDA 01, also the accessories. The system detects minor liquid leakages fast and reliable. An optical and acoustic signal arises. Simultaneously the potential-free contact switches. This can be used for signalling to PLC or to a building control unit. The leakage is being localized exact by 1 meter and get visualized on the 4-digit display. Thus a leakage will be found by a service person quick and true.

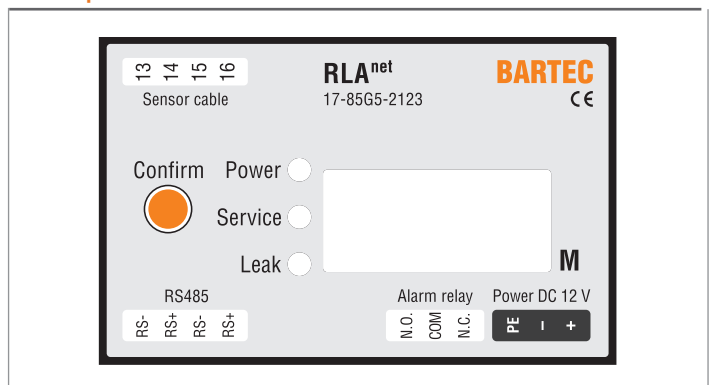
Visualisation

The service-software (for WINDOWS-PC) calls the system status via RS485 in real-time. The data is available in MODBUS RTU protocol. Up to 250 MODBUS addresses will be handled. The typical application parametrisation will also be managed by using this service-software. Download the service software and the extended manual on bartec.com.

Technical data

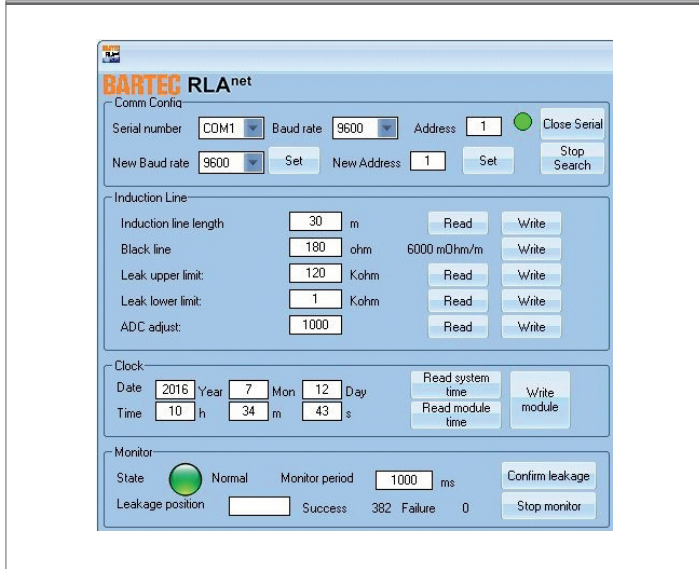
Power supply	DC 12 V to 24 V $\pm 10\%$; 3 W
Method of measurement	conductive (conductive liquids $> 30 \mu\text{S}/\text{cm}$) accuracy: $\pm 1\%$
Inputs	Sensor via 4-wire cable Sensor cable length: max. 500 m Point sensors: max. 50 pieces Sensitivity: adjustable
Outputs	Collective message alarm relay, 1 floating change-over contact AC 12: 0.5 A, 125 V DC 13: 1 A, 24 V RS485, Modbus RTU, for process visualization and parametrization
Memory	Alarm-/Break storage, last 32 happenings
Signal optical	Power LED red, relay de-energized Leak LED green, relay energized Service LED green, relay energized
Signal acoustic	Piezoelectric buzzer quit by pressing button on front panel
Ambient temperature	-20 °C to +50 °C at 5 % to 95 % air humidity (non-condensing)
Storage temperature	-40 °C to +60 °C
Protection class	IP 20
Housing material	Thermoplastic
Mounting	Clip-on enclosure for mounting rail TS 35
Dimensions (W x H x D)	70 mm x 86 mm x 53 mm
SCR sensor cable	Terminal 13, white, perforated Terminal 14, white, insulated Terminal 15, red, perforated Terminal 16, red, insulated
Point sensor PS terminal via installation cable	Terminal 13, 1 (e.g. white LIYY) Terminal 14, 2 (e.g. brown LIYY) Terminal 15, 3 (e.g. green LIYY) Terminal 16, 4 (e.g. yellow LIYY)

Front panel



Service-Software

Parametrization



Ordering information

Monitoring unit RLA ^{net} for DIN rail mounting	17-85G5-21230000
RLA ^{net} for wall-mounting:	
IP housing, 1 universal power supply, 1 RLA ^{net} , 1 power relay	17-85-21230100
IP housing, 1 universal power supply, 2 RLA ^{net} , 2 power relay	17-85-21230200
IP housing, 2 universal power supply, 4 RLA ^{net} , 4 power relay	17-85-21230400
IP housing, 1 universal power supply, 1 RLA ^{net}	17-85G5-21230901
IP housing, 1 universal power supply, 2 RLA ^{net}	17-85G5-21230902
Retrofit kit: IP housing, 1 universal power supply, 1 Modbus interface, for 1 RLA ^{net}	05-0095-0001
For connecting the Modbus between two housings: Installation kit RJ45 panel jack, 1 Ethernet CAT.6; 2 m	05-0080-1075

Service-Software

Memory display

