

MPC^{net} 8CI/16CI

Features

- Up to 16 inputs
- Measurement of load or residual current up to 100 A
- Galvanic isolation between the inputs and the system
- Monitoring of up to three phases

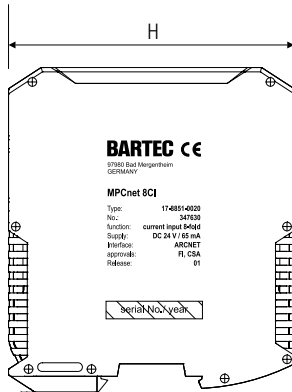
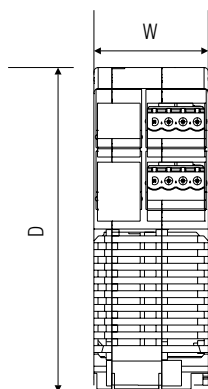
Description

The 8CI and 16CI current measuring modules register load and residual currents in conjunction with the LoaC and LeaC measuring transducers. Up to three phases and the total current can be monitored for each heating circuit. The individual inputs are assigned and configured either by means of the MPC^{net} ProcessDesigner software or by the touch panel.

The modules are operated and supplied through the MC32 controller. The internal, galvanically isolated bus connection is established by simply joining the modules together.

See the System Description for the Installation Instructions.

Dimensions (in mm)



	W	H	D
8 CI	41.0	110	114.5
16 CI	63.5	110	114.5

Technical data

Enclosure material

Polyamide PA

Protection class (EN 60529)

IP 20

Electrical connections

plug-in screw-type terminal, 3-pole terminal range 0.2 to 2.5 mm² numbered

Fastened to mounting rail

TH 35-15 DIN EN 60715 (metal)

Dimensions (W x H x D)

8CI 41.0 mm x 110 mm x 114.5 mm
 16CI 63.5 mm x 110 mm x 114.5 mm

Weight

8CI 274 g
 16CI 398 g

Storage and transport temperature

-30 °C to +70 °C

Operating temperature

0 °C to +60 °C

Degree of contamination

2

Electrical data

Number of channels

8CI 8 inputs
 16CI 16 inputs
 each for LoaC and LeaC measuring transducers

Measuring range

LoaC 0 to 70 A
 LeaC 0 to 700 mA

Galvanic isolation

between inputs and internal bus

Voltage supply

DC 24 V through internal bus

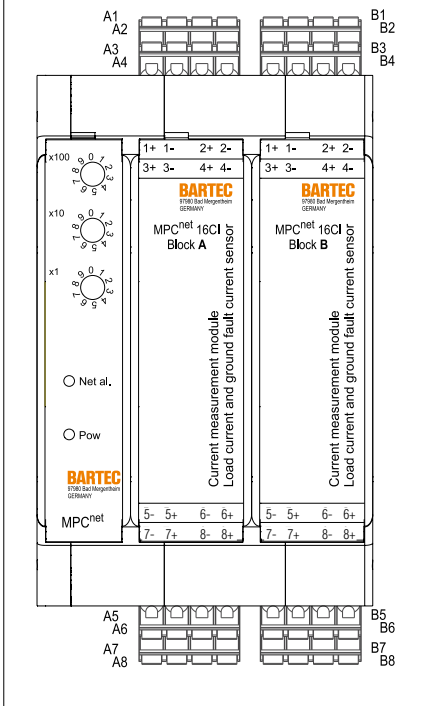
Current consumption

8CI 91 mA
 16CI 117 mA

Displays

LEDs in The front of the enclosure: Status Net al. Pow.

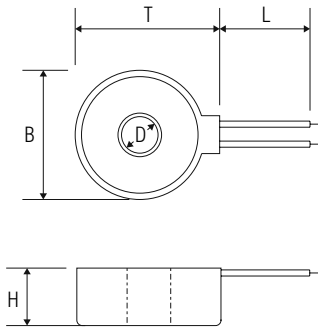
Wiring diagram/terminal assignment



Terminal block	Terminal	Description
A1	1+	current transformer +
	1-	current transformer -
A2	2+	current transformer +
	2-	current transformer -
A3	3+	current transformer +
	3-	current transformer -
A4	4+	current transformer +
	4-	current transformer -
A5	5-	current transformer -
	5+	current transformer +
A6	6-	current transformer -
	6+	current transformer +
A7	7-	current transformer -
	7+	current transformer +
A8	8-	current transformer -
	8+	current transformer +

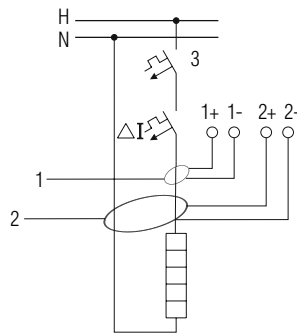
Terminal block	Terminal	Description
B1	1+	current transformer +
	1-	current transformer -
B2	2+	current transformer +
	2-	current transformer -
B3	3+	current transformer +
	3-	current transformer -
B4	4+	current transformer +
	4-	current transformer -
B5	5-	current transformer -
	5+	current transformer +
B6	6-	current transformer -
	6+	current transformer +
B7	7-	current transformer -
	7+	current transformer +
B8	8-	current transformer -
	8+	current transformer +

Accessories



	B	H	T	L
LeaC	30.4	9	33.4	250
LoaC	23.6	11	26.8	250

Example of connection



- 1 Load current transformer LoaC
- 2 Total current transformer LeaC
- 3 Power circuit breaker, C characteristics

- Order no.**
- Remote I/O modul MPC^{net} 8CI
17-8851-0020
 - Remote I/O modul MPC^{net} 16CI
17-8851-0021
- Accessories**
- MPC^{net}
LoaC load current transformer
17-8851-0023
 - MPC^{net}
LeaC total current transformer
17-8851-0024

Technical data subject to change without notice.