



Parts list

Item	Name of article	SAP number	Type number	Quantity (Automatic)	Quantity (Manually)
10	Conversion module 24V Ethernet3P	290940	17-614-0930	1	0
20	Head module 24 V PROFIBET	290336	17-5174-1200	1	0
30	ANTARES Remote IO Module I/O	291517	17-6140-1001	1	0
40	ANTARES Remote IO Module I/O	291518	17-6140-1002	1	0
50	ANTARES Remote IO Module I/O	291524	17-6140-1008	1	0
60	ANTARES Remote IO Module I/O	291520	17-6140-1004	1	0
70	ANTARES Remote IO Module I/O	291522	17-6140-1006	1	0
80	ANTARES Remote IO Module I/O	291519	17-6140-1003	1	0
90	ANTARES Remote IO Module I/O	291521	17-6140-1005	1	0
100	ANTARES Remote IO Module I/O	291523	17-6140-1007	1	0
110	ANTARES Remote IO Module I/O	291745	17-6140-1010	1	0
120	ANTARES Remote IO Module I/O	290339	17-6140-1014	1	0
130	Subsage module	290943	09-0070-0204	1	0
140	Board module	288-04	08-0078-0285	1	0
150	Earth terminal 6 sq mm	212289	00-7122-0009	1	0
160	System total ANTARES DC24V, 40 °C, Zone 1	300-96	00-0000-0001	1	0

The ANTARES designer software has been developed by BARTEC. It operates intuitively, enabling the system to be planned and configured with just a few clicks of the mouse. During the set-up process, users can view their actual system configuration in true-to-scale image; the program also monitors compliance with certain limit values such as spacing, power management and the maximum data length on the PROFIBUS. Further functions such as the generation of parts lists and automatic enquiry by email are also possible. The software is also equipped with a CONSTRUCTOR (project or system generator), which calculates the required inputs and outputs and the spare capacity needed for the most cost-effective, i.e. optimal, system. The current output load can be automatically calculated specifically for the digital remote I/O output modules. The software has been developed for use with WINDOWS® XP or WINDOWS® 7.

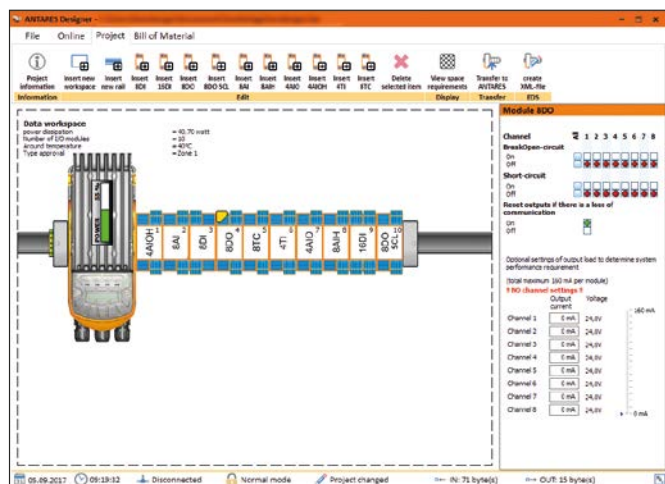
Ordering information

Software ANTARES Designer

17-28TF-0074

Technical data subject to change without notice.

Project Planning



Constructor

Constructor

RCU Settings

Host communication PROFIBUS

Cable glands Standard

System configuration [Module Diagram]

System name

DP slave number

Max. ambiente temperature

← Back
Next →
✕ Cancel