



- High flexibility
- Easy installation
- High IP protection type

The ComEx switching module can be used in almost all potentially explosive areas where machine functions need to be triggered by a button or a switch. ComEx switching modules are flexible in use and offer a range of actuator elements. All contacts of the switching module are self-cleaning, and NC contacts have positive opening. The conductor is connected using terminals with increased safety on the back of the module. The simple installation of the actuator elements without tools guarantees the high IP protection type.

Explosion protection

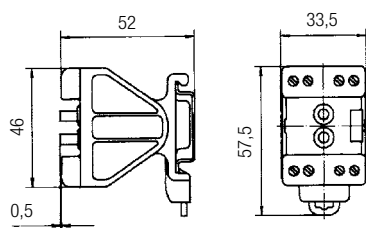
Marking ATEX	II 2G Ex db eb IIC Gb I M2 Ex db eb I Mb
Certification	CML 17 ATEX 1105U
Marking IECEx	Ex db eb IIC Gb Ex db eb I Mb
Certification	IECEx CML 17.0045U
Other approvals and certificates, see www.bartec.de	
Ambient temperature	-55 °C to +60 °C

Technical data

Protection class	determined by the actuating element and ComEx enclosure, min. IP 66, terminals IP 20, (IEC 60529).			
Rated insulation voltage	690 V			
Rated voltage	400 V	400 V	110 V	24 V
Utilization category	AC-12	AC-15	DC-13	DC-13
Rated operating currents	16 A	10 A	0,5 A	1 A
Conventional thermal current I_{th}	16 A/+40 °C, 11 A/+60 °C			
Contact options	contacts with positive break operation (self-cleaning) 1 NC and 1 NO or 2 NC or 2 NO			
Contact material	AgSnO ₂			
Enclosure material	Thermoplastic			
Connection	Terminals 2.5 mm ² , fine stranded			
Mechanical life	>10 ⁶ switching cycles			
Storage and transport temperature	-55 °C to +70 °C			
Weight	approx. 70 g			
Mounting	on mounting rail NS 35 x 7.5			
Shock resistance	DIN EN/IEC 60068-2-27, 30 g 18 ms			

1

Dimensions



Ordering information

Type of contacts	Code no.	Actuating element	Code no.
2 NC 	1	Pushbutton	0700
		Double push button actuator	7400
		Emergency stop NOT-AUS	0800
		Selector switch 0 + I latching, 2 positions	0900
		Selector switch I + II latching, 3 positions	1000
2 NO 	2	Selector switch I + II momentary-contact, 3 positions	1001
		Selector switch I latching, II momentary-contact, 3 positions	1002
		Selector switch I momentary-contact, II latching, 3 positions	1003
		Mushroom pushbutton, black	1800
		1 NC + 1 NO 	4
Lockable in the depressed position, DOM lock	1201		
Lockable in the initial position, DOM lock	1202		
Locking-type mushroom pushbutton	1203		

Complete order no.

Switch module without actuating element 07-3321-1 00

Actuating element Standard 05-0003-00

Increased oil resistance 05-0003-00 BN

Please enter code number. Other actuators available see following.
 Technical data subject to change without notice.