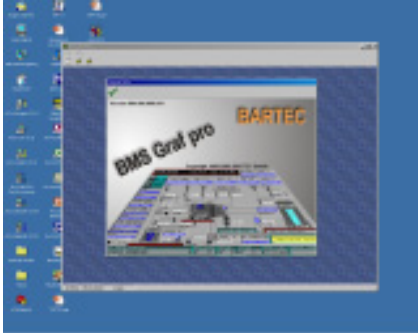


## *BMS Graf pro software*



*Initial display*

### **Description**

The BMS Graf pro software package is a very convenient tool for the generation of process representations.

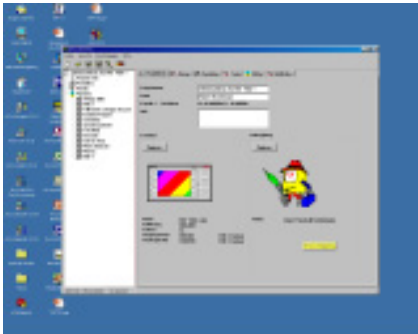
Individual images and projects are created on a PC and stored in the display terminal. The programme ensures that the single images use only very small amount of memory space.

This allows the storage of over 100 images. The well established and highly reliable functions of the BMS Graf are still available for example: input and output fields, bar graphs and vector graphics. All existing projects/application can be integrated within the new software.

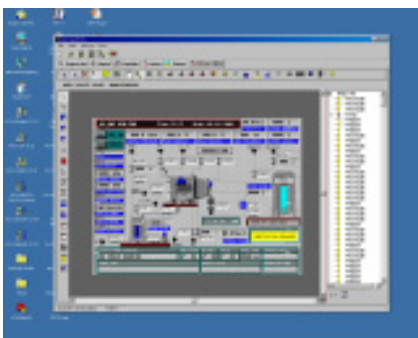
The completely new WINDOWS based platform is suitable for most popular versions of WINDOWS 95/98/NT, WIN 2000/ME and XP.

With the selection of the correct protocol driver (please refer to table) connections to various PLC systems are possible.

BARTEC is continuously increasing the number of protocols available.



*Project display*



*Edit image*

<b>Logic controllers for serial coupling</b>	
<b>Description</b>	<b>PLC</b>
AS511 on S5 Programming Port	S5-95U to 115U
MPI on S7 Programming Port	S7-300, S7-400 with MPI-Box
3964R with RK 512	S5 with communication processor CP524 to CP544 S7-300 with CP341 S7-400 with CP441-2
Modbus RTU, Slave and Master	Telemecanique TSX-Series with communication processor TSXSCG1131 April AEG A-series with Modbus module, AEG Modicon, AEG Quantum Allen Bradley SLC500 with Pro Soft module (3150MCM) Allen Bradley PLC5/40 or PLC5/60 with communication board 17-71-DBMM HIMA H51, HIMA H41, HIMA H11 Yokogawa SMCC Micro XL with communication processor PX1 Yokogawa Centrum CS with communication processor ACM11 GE-FANUC 90-30 with communication processor CMM311E GE-FANUC 90-70 with communication processor CMM711 or PCM711 DCS Eurotherm, DCS Fisher&Porter SistemSix Foxboro DCS 80E, AS21 Honeywell TDC3000 Fisher Rosemount Delta V Saia PCD
Mitsubishi A	Mitsubishi A with communication processor ASJ71C24
COMLI	Sattcontrol Alfa Laval
Hostlink	OMRON SYSMAC CQM1
<b>Logic controllers for PROFIBUS DP</b>	
<b>Name</b>	<b>PLC</b>
Siemens	S5-95U with PROFIBUS DP Master interface S5-135U with PROFIBUS DP Master interface EM308C S7-300 with CPU 315-2 DP (Master) S7-400 with CPU 416-2 DP (Master) PCS 7
Hartmann&Braun	Freelance 2000 with field controller
Schneider	TSX Premium with PROFIBUS coupling unit AEG Quantum with PROFIBUS coupling unit

Software BMS Graf pro is including the latest handling units. For more possibilities ask us.

<b>Selection chart</b>	
<b>Name</b>	<b>Code no.</b>
Software package BMS Graf pro <b>german</b>	<b>1</b>
Software package BMS Graf pro <b>english</b>	<b>2</b>
Software package BMS Graf pro <b>french</b>	<b>3</b>

➔ **Complete order no.**  
**BMS Graf pro 17-28TF-0071/0**  **00**  
 Please enter code number.