



Aluminium enclosures

Features

- Temperature-resistant
- Chemical-resistant against acetone and ammoniac; against benzene, benzole, heating oil
- Seawater-resistant with special varnishing and priming on request

Description

Aluminium enclosures have proven to be an excellent solution for encapsulating and shielding components and modules in electronic and pneumatic engineering. The base and lid of the enclosure come with earthing screws for the connection of the protective conductor. Fixing holes outside the sealed space.

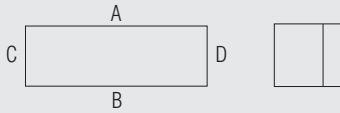
Selection chart IP enclosure

External dimensions in mm			Aluminium grey, IP 66
Length	Width	Height	➔ Order no.
58	64	36	07-5190-0580/6436
98	64	36	07-5190-0980/6436
150	64	36	07-5190-1500/6436
75	80	57	07-5190-0750/8057
125	80	57	07-5190-1250/8057
175	80	57	07-5190-1750/8057
250	80	57	07-5190-2500/8057
122	120	80	07-5190-1221/2080
122	120	90	07-5190-1221/2090
360	120	80	07-5190-3601/2080
220	120	80	07-5190-2201/2080
220	120	90	07-5190-2201/2090
160	160	90	07-5190-1601/6090
260	160	90	07-5190-2601/6090
360	160	90	07-5190-3601/6090
560	160	90	07-5190-5601/6090
200	230	110	07-5190-2002/3011
280	230	110	07-5190-2802/3011
330	230	110	07-5190-3302/3011
400	230	110	07-5190-4002/3011
600	230	110	07-5190-6002/3011
400	310	110	07-5190-4003/3011
600	310	110	07-5190-6003/3011
200	230	180	07-5190-2002/3018
330	230	180	07-5190-3302/3018
400	310	180	07-5190-4003/1018
600	310	180	07-5190-6003/1018

<i>Ex enclosure</i>	grey 07-5180-..../....
➔ Explosion protection	
Ex protection type	⊕ II 2G Ex e II
Certification	PTB 08 ATEX 1063 U 30 584-83HH POCC SI.ME 92.B01671 PPC 00-33604
Germanischer LLoyd (Germany) Gost-R (Russia) RTN (Russia)	
➔ Technical data	
Material	aluminium, die or shell casting, (metal mould) ALSi 12, Mg < 6 thread -%
Colour	RAL 7001, silver grey special varnish and seawater-resistant varnish on request
Lid screws (other models on request)	stainless steel, captive, cross-head (+ -)
Standard seals optional	CR -20 °C to +80 °C silicone -55 °C to +100 °C
Mechanical resistance nach EN 60079-0	impact energy 7 Nm
Protection class EN 60529/IEC 60529	IP 66



Dimensions (mm)



The dimensions on this page apply to the following aluminium enclosure/distribution boxes:

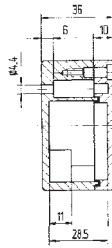
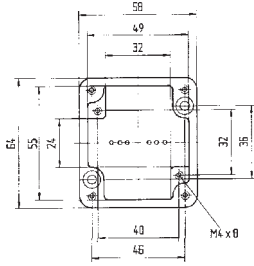
IP enclosure 07-5190-.../...

IP distribution box 07-5172-.../...

Ex enclosure 07-5180-.../...

Ex e distribution box 07-5101-.../...

Ex i distribution box 07-5102-.../...



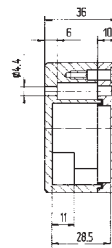
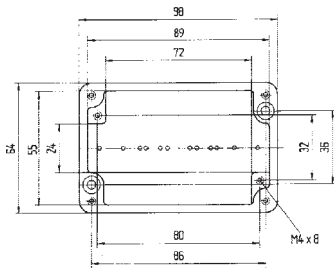
Technical data

External dimensions: 58 x 64 x 36 mm

Weight: 150 g

Material: aluminium, grey

Article no.: 07-51 -0580/6436

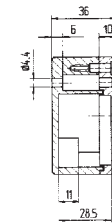
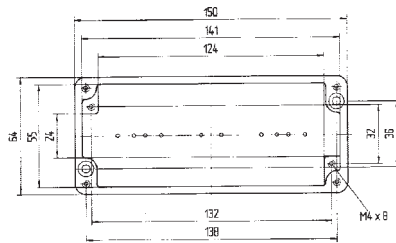


External dimensions: 98 x 64 x 36 mm

Weight: 250 g

Material: aluminium, grey

Article no.: 07-51 -0980/6436

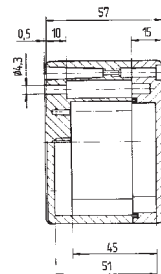
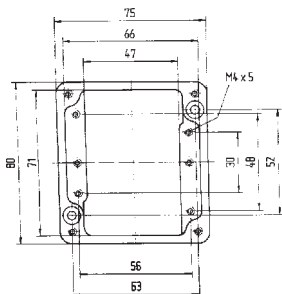


External dimensions: 150 x 64 x 36 mm

Weight: 320 g

Material: aluminium, grey

Article no.: 07-51 -1500/6436



External dimensions: 75 x 80 x 57 mm

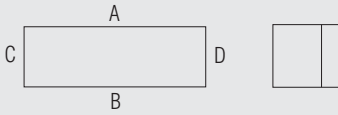
Weight: 300 g

Material: aluminium, grey

Article no.: 07-51 -0750/8057

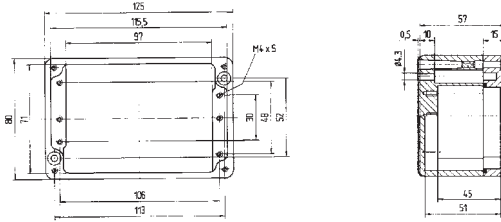


Dimensions (mm)



The dimensions on this page apply to the following aluminium enclosure/distribution boxes:

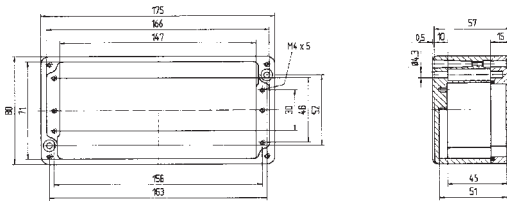
- IP enclosure 07-5190-.../...
- IP distribution box 07-5172-.../...
- Ex enclosure 07-5180-.../...
- Ex e distribution box 07-5101-.../...
- Ex i distribution box 07-5102-.../...



Technical data

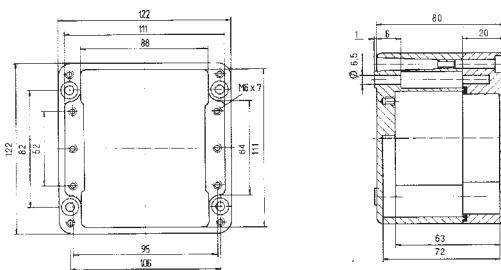
External dimensions: 125 x 80 x 57 mm

Weight: 440 g
 Material: aluminium, grey
 Article no.: 07-51 -1250/8057



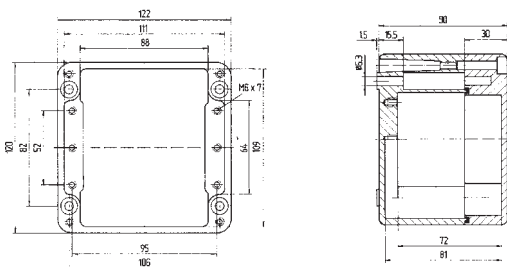
External dimensions: 175 x 80 x 57 mm

Weight: 510 g
 Material: aluminium, grey
 Article no.: 07-51 -1750/8057



External dimensions: 122 x 122 x 80 mm

Weight: 940 g
 Material: aluminium, grey
 Article no.: 07-51 -1221/2080

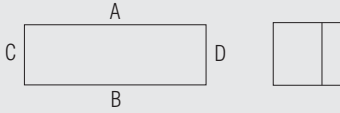


External dimensions: 122 x 120 x 90 mm

Weight: 880 g
 Material: aluminium, grey
 Article no.: 07-51 -1221/2090



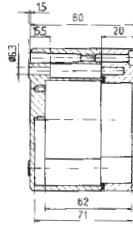
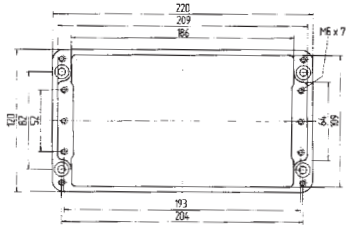
Dimensions (mm)



The dimensions on this page apply to the following aluminium enclosure/distribution boxes:

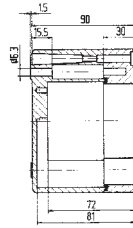
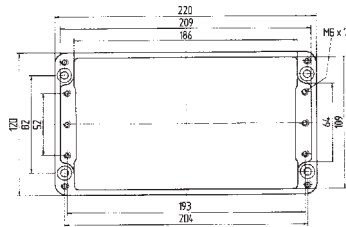
- IP enclosure 07-5190-.../...
- IP distribution box 07-5172-.../...
- Ex enclosure 07-5180-.../...
- Ex e distribution box 07-5101-.../...
- Ex i distribution box 07-5102-.../...

Technical data



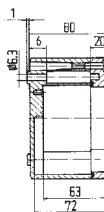
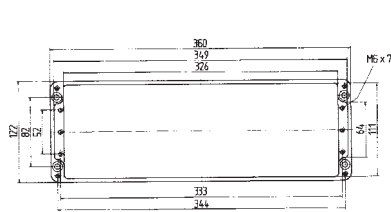
External dimensions: 220 x 120 x 80 mm

- Weight: 1390 g
- Material: aluminium, grey
- Article no.: 07-51 -2201/2080



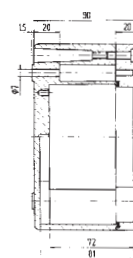
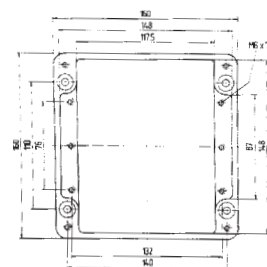
External dimensions: 220 x 120 x 90 mm

- Weight: 1350 g
- Material: aluminium, grey
- Article no.: 07-51 -2201/2090



External dimensions: 360 x 120 x 80 mm

- Weight: 1950 g
- Material: aluminium, grey
- Article no.: 07-51 -3601/2080

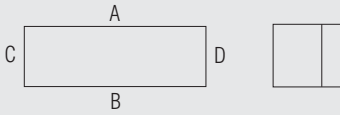


External dimensions: 160 x 160 x 90 mm

- Weight: 1470 g
- Material: aluminium, grey
- Article no.: 07-51 -1601/6090



Dimensions (mm)



The dimensions on this page apply to the following aluminium enclosure/distribution boxes:

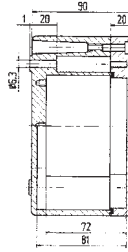
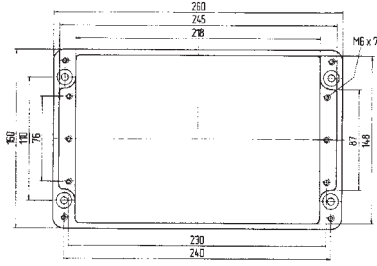
IP enclosure 07-5190-.../...

IP distribution box 07-5172-.../...

Ex enclosure 07-5180-.../...

Ex e distribution box 07-5101-.../...

Ex i distribution box 07-5102-.../...



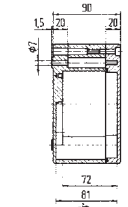
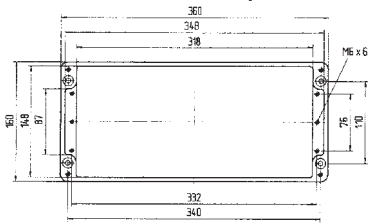
Technical data

External dimensions: 260 x 160 x 90 mm

Weight: 2100 g

Material: aluminium, grey

Article no.: 07-51 [] -2601/6090

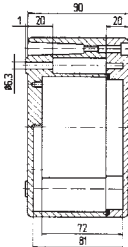
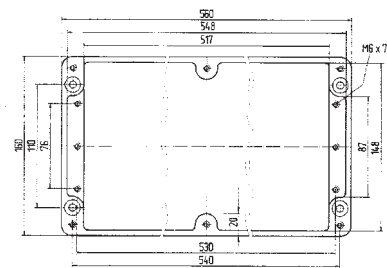


External dimensions: 360 x 160 x 90 mm

Weight: 2700 g

Material: aluminium, grey

Article no.: 07-51 [] -3601/6090

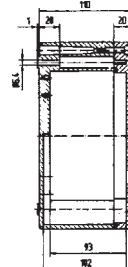
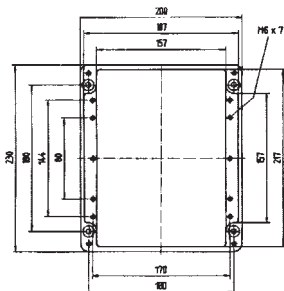


External dimensions: 560 x 160 x 90 mm

Weight: 3600 g

Material: aluminium, grey

Article no.: 07-51 [] -5601/6090



External dimensions: 200 x 230 x 110 mm

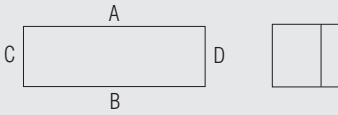
Weight: 2450 g

Material: aluminium, grey

Article no.: 07-51 [] -2002/3011



Dimensions (mm)



The dimensions on this page apply to the following aluminium enclosure/distribution boxes:

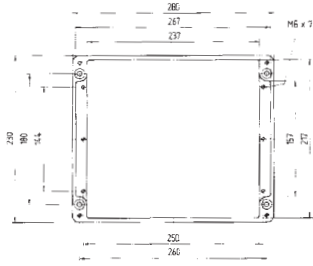
IP enclosure 07-5190-.../...

IP distribution box 07-5172-.../...

Ex enclosure 07-5180-.../...

Ex e distribution box 07-5101-.../...

Ex i distribution box 07-5102-.../...



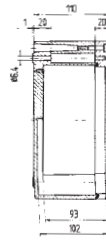
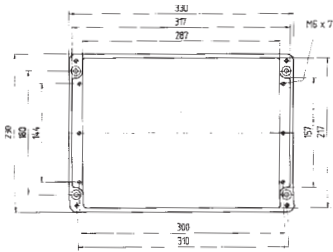
Technical data

External dimensions: 280 x 230 x 110 mm

Weight: 2990 g

Material: aluminium, grey

Article no.: 07-51 -2802/3011

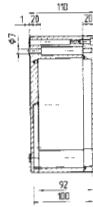
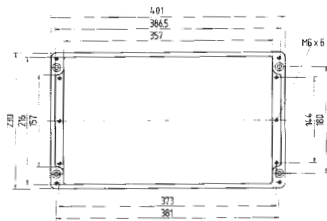


External dimensions: 330 x 230 x 110 mm

Weight: 3400 g

Material: aluminium, grey

Article no.: 07-51 -3302/3011

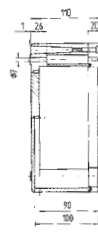
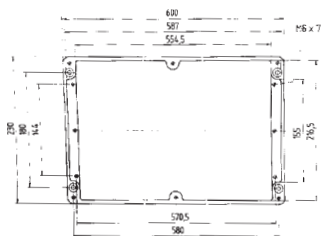


External dimensions: 400 x 230 x 110 mm

Weight: 4600 g

Material: aluminium, grey

Article no.: 07-51 -4002/3011



External dimensions: 600 x 230 x 110 mm

Weight: 6800 g

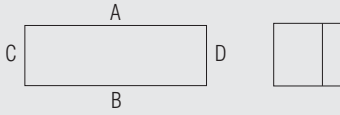
Material: aluminium, grey

Article no.: 07-51 -6002/3011

All dimensions are approximate measurements and subject to technical changes.

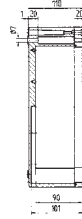
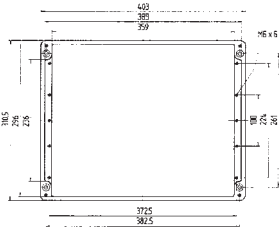


Dimensions (mm)



The dimensions on this page apply to the following aluminium enclosure/distribution boxes:

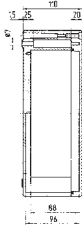
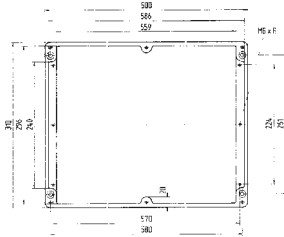
<i>IP enclosure</i>	<i>07-5190-.../...</i>	<i>IP distribution box</i>	<i>07-5172-.../...</i>
<i>Ex enclosure</i>	<i>07-5180-.../...</i>	<i>Ex e distribution box</i>	<i>07-5101-.../...</i>
		<i>Ex i distribution box</i>	<i>07-5102-.../...</i>



Technical data

External dimensions: 400 x 310 x 110 mm

Weight: 6600 g
 Material: aluminium, grey
 Article no.: 07-51 -4003/1011



External dimensions: 600 x 310 x 110 mm

Weight: 9400 g
 Material: aluminium, grey
 Article no.: 07-51 -6003/1011

Aluminium enclosure for NPT thread on request (insulation thickness). All dimensions are approximate measurements and subject to terminal changes.