



Polyester enclosures

Features

- Chemical-resistant
- Temperature-resistant
- Flame-retardant
- Use in Ex areas with a surface resistance <math>< 10^9 \Omega</math>, black enclosure
- Corrosion-proof
- Seawater-proof

Description

Polyester enclosures have proven their worth in many industrial plants. They offer safe protection even when they are used under extremely unfavorable conditions, on exposure to aggressive chemical media or hard mechanical conditions. The inside base of the enclosure has at its sides, threaded bushings for the fastening of mounting rails or panels. The enclosure is mounted by means of insulated screws outside of the lid seal.

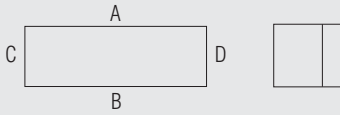
Selection chart			Empty enclosure	
External dimensions in mm			Polyester black, IP 66/67	Polyester grey, IP 66/67
Length (L)	Width (B)	Height (H)	➔ Order no.	➔ Order no.
80	75	55	07-5195-0800/7555	07-5194-0800/7555
110	75	55	07-5195-1100/7555	07-5194-1100/7555
160	75	55	07-5195-1600/7555	07-5194-1600/7555
190	75	55	07-5195-1900/7555	07-5194-1900/7555
122	120	90	07-5195-1221/2090	07-5194-1221/2090
122	120	120	07-5195-1221/2012	07-5194-1221/2012
220	120	90	07-5195-2201/2090	07-5194-2201/2090
160	160	90	07-5195-1601/6090	07-5194-1601/6090
160	160	120	07-5195-1601/6012	07-5194-1601/6012
260	160	90	07-5195-2601/6090	07-5194-2601/6090
360	160	90	07-5195-3601/6090	07-5194-3601/6090
560	160	90	07-5195-5601/6090	07-5194-5601/6090
200	250	120	07-5195-2002/5012	
255	250	120	07-5195-2552/5012	07-5194-2552/5012
255	250	160	07-5195-2552/5016	07-5194-2552/5016
400	250	120	07-5195-4002/5012	07-5194-4002/5012
400	250	160	07-5195-4002/5016	07-5194-4002/5016
400	405	120	07-5195-4004/0512	07-5194-4004/0512
400	405	165	07-5195-4004/0516	07-5194-4004/0516
600	250	120	07-5195-6002/0512	07-5194-6002/5012

Ex enclosure	black 07-5185-.../...	grey 07-5184-.../...
➔ <b>Explosion protection</b>		
<b>Ex protection type</b> (EN 60079-0)	⚡ II 2G Ex e II ⚡ I M2 Ex e I	⚡ II 2G Ex e II
<b>Certification</b> (further certifications on request)	PTB 08 ATEX 1062 U UL E188224 (NEMA 4X) IBExU01ATEX1042 U 30 584-83 HH PTB 09.0008X 2009EC02CP002U POCC SI.ME 92.B01671 PPC 00-33604 09-AV4B0-0404U E188224	PTB 08 ATEX 1062 U UL E188224 (NEMA 4X)
For group 1 Germanischer Lloyd (Germany) IECEx INMETRO (Brazil) Gost-R (Russia) RTN (Russia) KOSHA (Korea) UL (USA)		30 584-83 HH PTB 09.0008X 2009EC02CP002U POCC SI.ME 92.B01671 PPC 00-33604 09-AV4B0-0404U E188224
➔ <b>Technical data</b>		
<b>Material</b>	glass-fiber reinforced polyester, EN 60079-0 surface resistance <math>< 10^9 \Omega</math> halogen-free	glass-fiber reinforced polyester, EN 60079-0 surface resistance >math>>10^{12} \Omega</math> halogen-free
<b>Colour</b>	RAL 9005, black	RAL 7000/RAL 7001, grey
<b>Lid screws</b> (other models on request)	stainless steel cross-head (+ -)	stainless steel cross-head (+ -)
<b>Standard seal optional</b>	EPDM -20 °C to +100 °C Silicone -55 °C to +100 °C	EPDM -20 °C to +100 °C Silicone -55 °C to +100 °C
<b>Mechanical resistance</b> (EN 60079-0)	impact energy 7 Nm	impact energy 7 Nm
<b>Protection class</b> EN 60529/IEC 60529	IP 66	IP 66

03-0330-0196/A-06/10-ECS-8201167/1

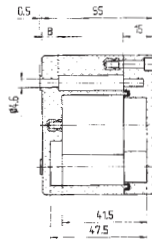
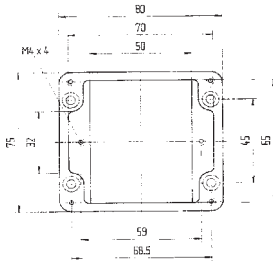


**Dimensions (mm)**



The dimensions indicated on this page apply to the following polyester enclosures and distribution boxes:

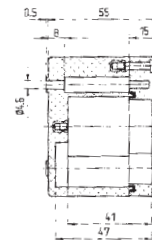
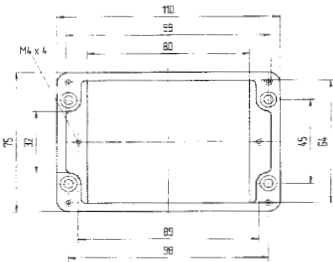
<i>IP enclosure</i>	<i>black</i>	<i>07-5195-.../...</i>	<i>Ex e distribution box</i>	<i>black</i>	<i>07-5103-.../...</i>
<i>IP enclosure</i>	<i>grey</i>	<i>07-5194-.../...</i>	<i>Ex e distribution box</i>	<i>grey</i>	<i>07-5106-.../...</i>
<i>Ex enclosure</i>	<i>black</i>	<i>07-5185-.../...</i>	<i>Ex i distribution box</i>	<i>black</i>	<i>07-5105-.../...</i>
<i>Ex enclosure</i>	<i>grey</i>	<i>07-5184-.../...</i>	<i>Ex i distribution box</i>	<i>grey</i>	<i>07-5107-.../...</i>
<i>IP distribution box</i>	<i>black</i>	<i>07-5178-.../...</i>			
<i>IP distribution box</i>	<i>grey</i>	<i>07-5177-.../...</i>			



**Technical data**

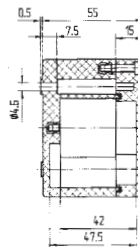
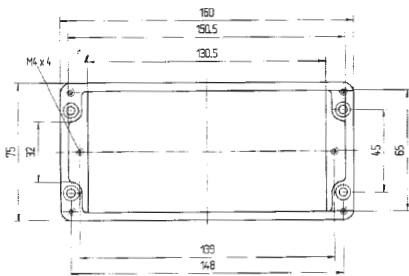
**External dimensions: 80 x 75 x 55 mm**

Weight: 230 g  
 Material: polyester, grey, black  
 Article no.: 07-51   -0800/7555



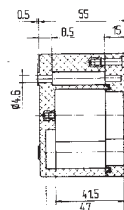
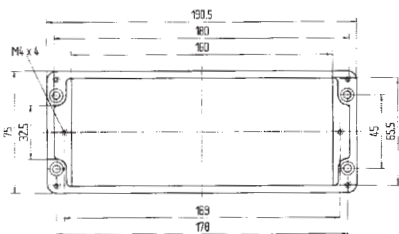
**External dimensions: 110 x 75 x 55 mm**

Weight: 280 g  
 Material: polyester, grey, black  
 Article no.: 07-51   -1100/7555



**External dimensions: 160 x 75 x 55 mm**

Weight: 370 g  
 Material: polyester, grey, black  
 Article no.: 07-51   -1600/7555

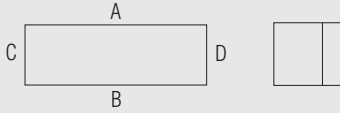


**External dimensions: 190 x 75 x 55 mm**

Weight: 430 g  
 Material: polyester, grey, black  
 Article no.: 07-51   -1900/7555

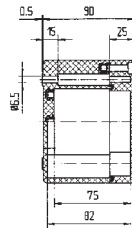
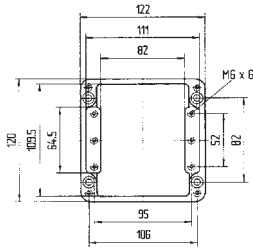


Dimensions (mm)



The dimensions indicated on this page apply to the following polyester enclosures and distribution boxes:

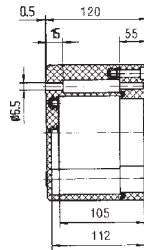
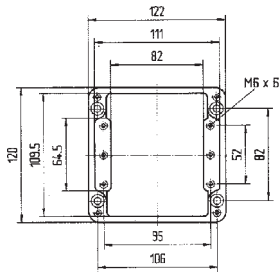
<i>IP enclosure</i>	<i>black</i>	<i>07-5195-.../...</i>	<i>Ex e distribution box</i>	<i>black</i>	<i>07-5103-.../...</i>
<i>IP enclosure</i>	<i>grey</i>	<i>07-5194-.../...</i>	<i>Ex e distribution box</i>	<i>grey</i>	<i>07-5106-.../...</i>
<i>Ex enclosure</i>	<i>black</i>	<i>07-5185-.../...</i>	<i>Ex i distribution box</i>	<i>black</i>	<i>07-5105-.../...</i>
<i>Ex enclosure</i>	<i>grey</i>	<i>07-5184-.../...</i>	<i>Ex i distribution box</i>	<i>grey</i>	<i>07-5107-.../...</i>
<i>IP distribution box</i>	<i>black</i>	<i>07-5178-.../...</i>			
<i>IP distribution box</i>	<i>grey</i>	<i>07-5177-.../...</i>			



Technical data

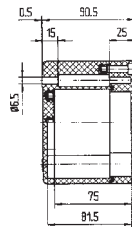
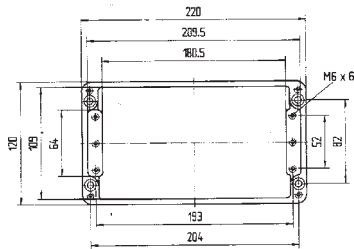
External dimensions: 122 x 120 x 90 mm

Weight: 660 g  
 Material: polyester, grey, black  
 Article no.: 07-51  -1221/2090



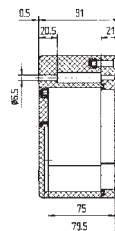
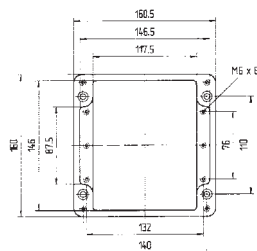
External dimensions: 122 x 120 x 120 mm

Weight: 890 g  
 Material: polyester, grey, black  
 Article no.: 07-51  -1221/2012



External dimensions: 220 x 120 x 90 mm

Weight: 1040 g  
 Material: polyester, grey, black  
 Article no.: 07-51  -2201/2090

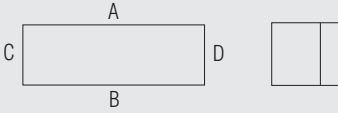


External dimensions: 160 x 160 x 90 mm

Weight: 1280 g  
 Material: polyester, grey, black  
 Article no.: 07-51  -1601/6090

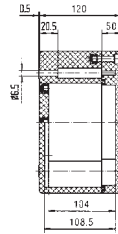
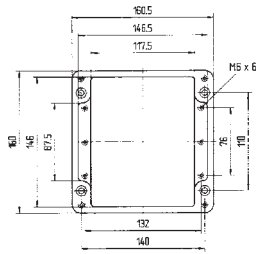


**Dimensions (mm)**



The dimensions indicated on this page apply to the following polyester enclosures and distribution boxes:

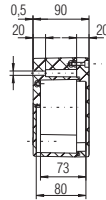
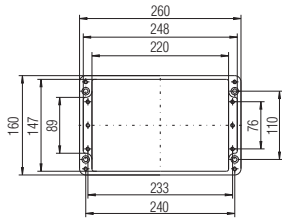
<i>IP enclosure</i>	<i>black</i>	<i>07-5195-.../...</i>	<i>Ex e distribution box</i>	<i>black</i>	<i>07-5103-.../...</i>
<i>IP enclosure</i>	<i>grey</i>	<i>07-5194-.../...</i>	<i>Ex e distribution box</i>	<i>grey</i>	<i>07-5106-.../...</i>
<i>Ex enclosure</i>	<i>black</i>	<i>07-5185-.../...</i>	<i>Ex i distribution box</i>	<i>black</i>	<i>07-5105-.../...</i>
<i>Ex enclosure</i>	<i>grey</i>	<i>07-5184-.../...</i>	<i>Ex i distribution box</i>	<i>grey</i>	<i>07-5107-.../...</i>
<i>IP distribution box</i>	<i>black</i>	<i>07-5178-.../...</i>			
<i>IP distribution box</i>	<i>grey</i>	<i>07-5177-.../...</i>			



**Technical data**

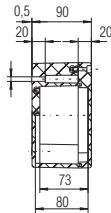
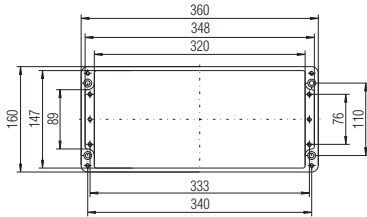
**External dimensions: 160 x 160 x 120 mm**

Weight: 1500 g  
 Material: polyester, grey, black  
 Article no.: 07-51  -1601/6012



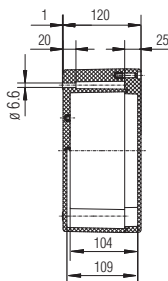
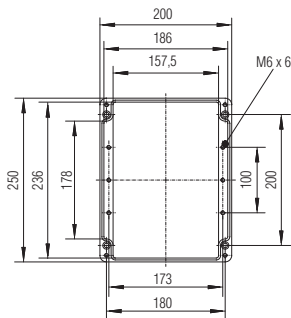
**External dimensions: 260 x 160 x 90 mm**

Weight: 1750 g  
 Material: polyester, grey, black  
 Article no.: 07-51  -2601/6090



**External dimensions: 360 x 160 x 90 mm**

Weight: 2300 g  
 Material: polyester, grey, black  
 Article no.: 07-51  -3601/6090

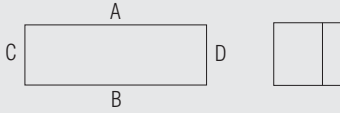


**External dimensions: 200 x 250 x 120 mm**

Weight: 2320 g  
 Material: polyester, black  
 Article no.: 07-51  -2552/5012

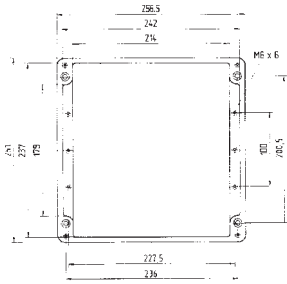


**Dimensions (mm)**



The dimensions indicated on this page apply to the following polyester enclosures and distribution boxes:

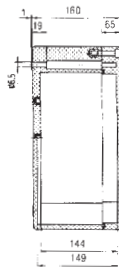
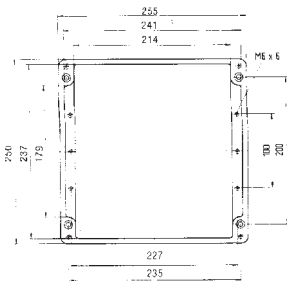
<i>IP enclosure</i>	<i>black</i>	<i>07-5195-.../...</i>	<i>Ex e distribution box</i>	<i>black</i>	<i>07-5103-.../...</i>
<i>IP enclosure</i>	<i>grey</i>	<i>07-5194-.../...</i>	<i>Ex e distribution box</i>	<i>grey</i>	<i>07-5106-.../...</i>
<i>Ex enclosure</i>	<i>black</i>	<i>07-5185-.../...</i>	<i>Ex i distribution box</i>	<i>black</i>	<i>07-5105-.../...</i>
<i>Ex enclosure</i>	<i>grey</i>	<i>07-5184-.../...</i>	<i>Ex i distribution box</i>	<i>grey</i>	<i>07-5107-.../...</i>
<i>IP distribution box</i>	<i>black</i>	<i>07-5178-.../...</i>			
<i>IP distribution box</i>	<i>grey</i>	<i>07-5177-.../...</i>			



**Technical data**

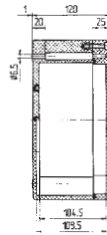
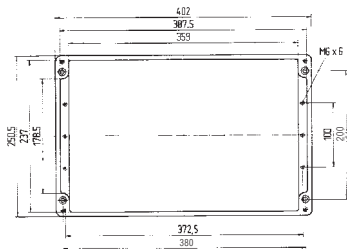
**External dimensions: 255 x 250 x 120 mm**

Weight: 2730 g  
 Material: polyester, grey, black  
 Article no.: 07-51   -2552/5012



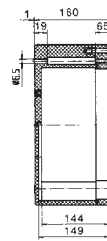
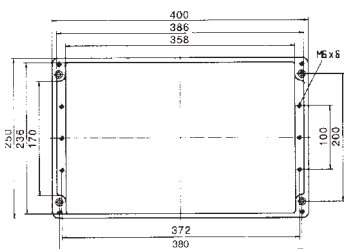
**External dimensions: 255 x 250 x 160 mm**

Weight: 3275 g  
 Material: polyester, grey, black  
 Article no.: 07-51   -2552/5016



**External dimensions: 400 x 250 x 120 mm**

Weight: 3650 g  
 Material: polyester, grey, black  
 Article no.: 07-51   -4002/5012



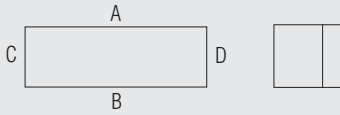
**External dimensions: 400 x 250 x 160 mm**

Weight: 4800 g  
 Material: polyester, grey, black  
 Article no.: 07-51   -4002/5016

All dimensions are approximate measurements and subject to technical changes.



**Dimensions (mm)**



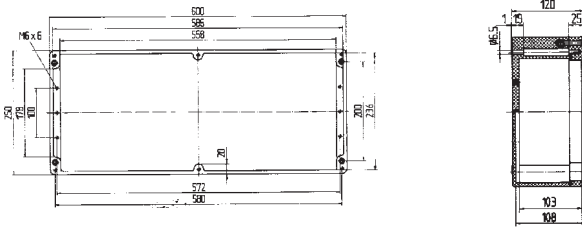
The dimensions indicated on this page apply to the following polyester enclosures and distribution boxes:

<i>IP enclosure</i>	<i>black</i>	<i>07-5195-.../...</i>	<i>Ex e distribution box</i>	<i>black</i>	<i>07-5103-.../...</i>
<i>IP enclosure</i>	<i>grey</i>	<i>07-5194-.../...</i>	<i>Ex e distribution box</i>	<i>grey</i>	<i>07-5106-.../...</i>
<i>Ex enclosure</i>	<i>black</i>	<i>07-5185-.../...</i>	<i>Ex i distribution box</i>	<i>black</i>	<i>07-5105-.../...</i>
<i>Ex enclosure</i>	<i>grey</i>	<i>07-5184-.../...</i>	<i>Ex i distribution box</i>	<i>grey</i>	<i>07-5107-.../...</i>
<i>IP distribution box</i>	<i>black</i>	<i>07-5178-.../...</i>			
<i>IP distribution box</i>	<i>grey</i>	<i>07-5177-.../...</i>			

**Technical data**

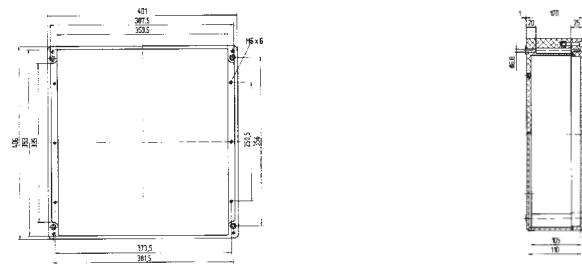
**External dimensions: 600 x 250 x 120 mm**

Weight: 5380 g  
 Material: polyester, grey, black  
 Article no.: 07-51  -6002/5012



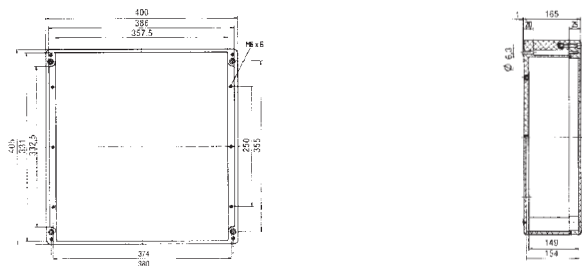
**External dimensions: 400 x 405 x 120 mm**

Weight: 5080 g  
 Material: polyester, grey, black  
 Article no.: 07-51  -4004/0512



**External dimensions: 400 x 405 x 165 mm**

Weight: 7740 g  
 Material: polyester, grey, black  
 Article no.: 07-51  -4004/0516



All dimensions are approximate measurements and subject to technical changes.