

Aluminium enclosures

Features

- Variety of covers
- Variety of connection possibilities
- Bushings can be fitted on all sides
- Flange surfaces for mounting enclosures
- Low weight

Description

This compact BARTEC Ex d enclosure is ideal for the installation of standard electrical devices or controls.

The enclosure are light and versatile when it comes to connection systems. They can be flanged on and allow electrical or mechanical bushings on the sides or the lid. Thanks to the various lid versions you can mount display units or devices with operator buttons. Installation of Ex i assemblies is furthermore permitted

- directly via cable insertion
- indirectly via line bushing and Ex e terminal enclosure

Note:

The use of an empty enclosure requires an acceptance inspection by a notified body.

➤ Explosion protection

Ex protection type

- ⊕ II 2(1)G Ex de ia/ib [ia] IIC T6, T5/T4
- ⊕ II 2G Ex d ia/ib [ib] IIC T6, T5/T4

Partial certification

Empty enclosure
PTB 03 ATEX 1137 U

Certification

Complete device
PTB 03 ATEX 1138

➤ Technical data

Protection class

min. IP 54/IEC 60529

Enclosure material

aluminium (GK-AL)

Electrical connection

directly via a cable entry or Ex e enclosure

Surface

acrylic paint
similar to RAL 7016

Temperature class

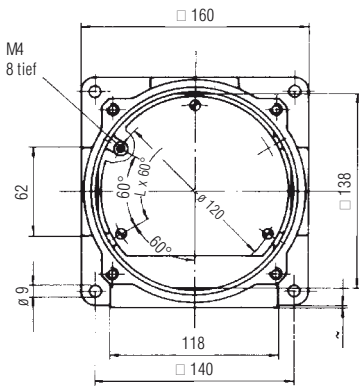
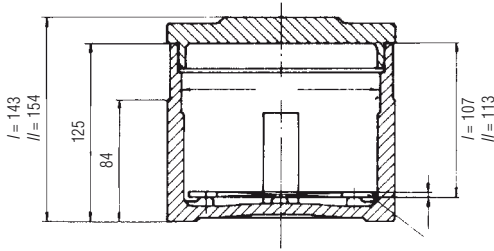
T5/T6

Weight

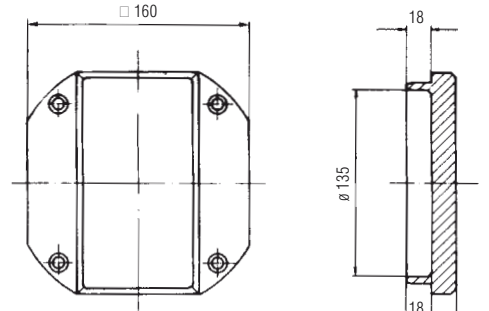
approx. 4 kg



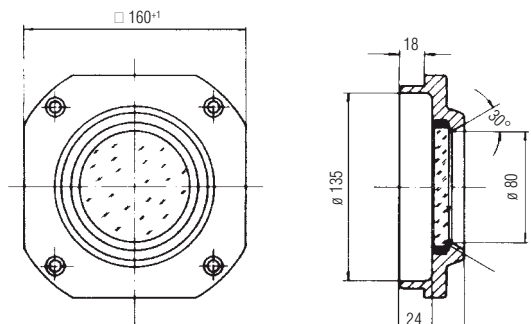
Dimensions



closed over



cover with Ø 80 mm diameter window



Versions to specification, please give particulars in pain text.

- Bushing for mechanical parts
- Ex e adapter box
- Special mounting plates
- Buhings for electrical parts

Selection chart

Description	Code no.
Ex d enclosure, closed lid	1
Ex d enclosure with Ø 80 mm diameter window	8

➔ Complete Order No.

Empty enclosure 07-4231-1

Control module 07-4230-1